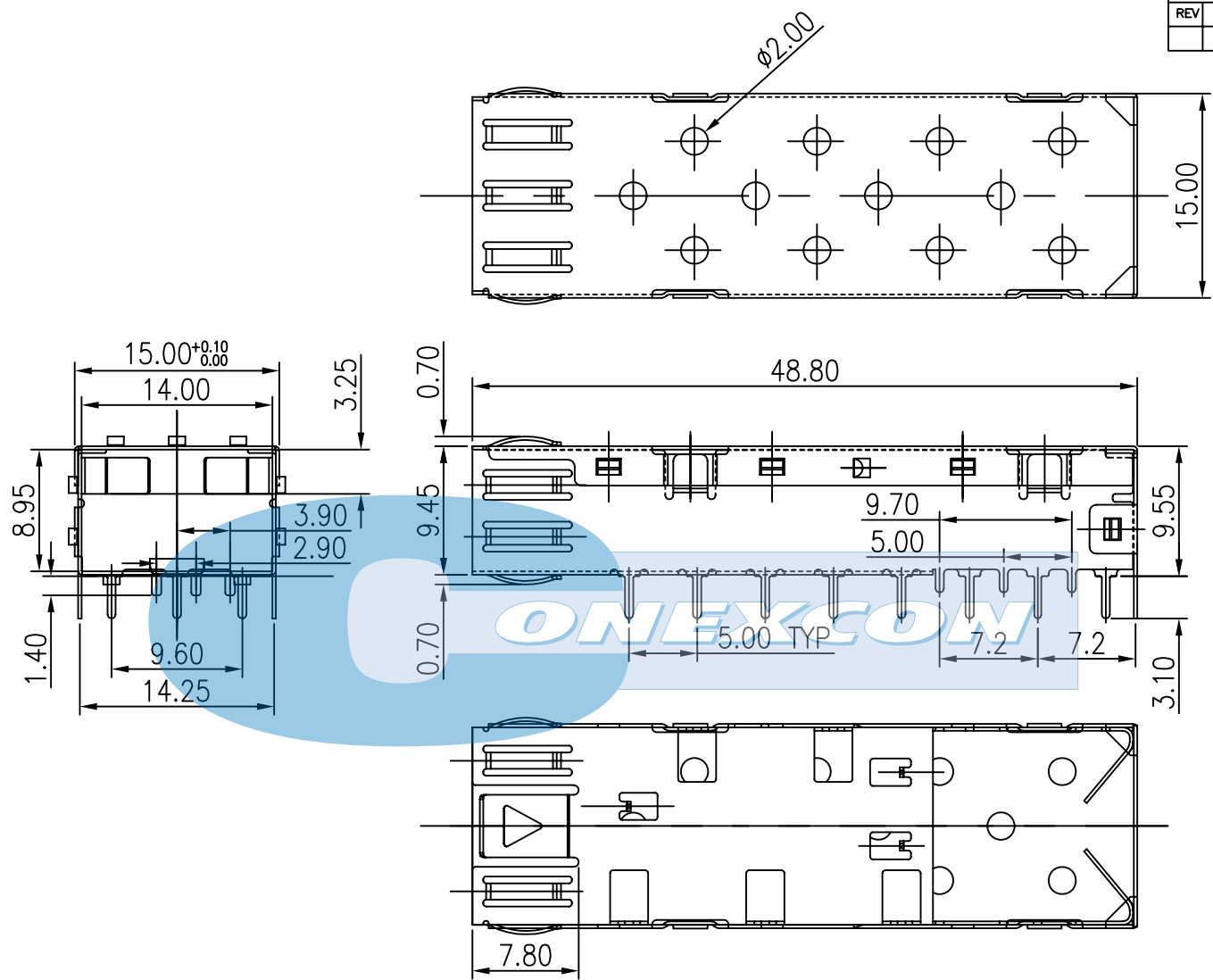


REVISION RECORD				
REV	ECO	DESCRIPTION	DRFT	CHKD



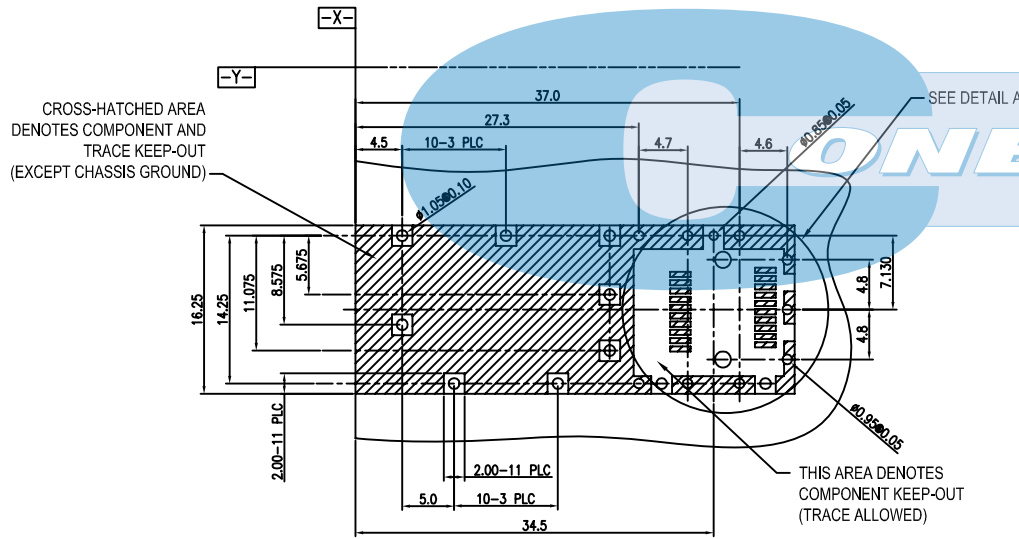
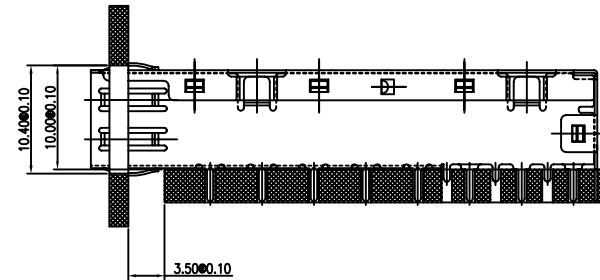
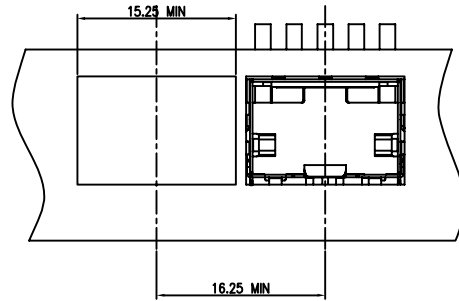
NOTE:

- | | | |
|--------------------------------|---------------|------------|
| 1. DESCRIPTION | MATERIAL | PLATING |
| (1) SFP TOP CAGE (Non-Logo) | C5191H T=0.25 | Ni FOR ALL |
| (2) SFP BOTTOM CAGE (Non-Logo) | C5191H T=0.25 | Ni FOR ALL |
| 2. TEMPERATURE: | | |
| OPERATION: -40° C ~ +85° C | | |
| STORAGE: -40° C ~ +85° C | | |
| 3. RoHS COMPLIANT | | |
| 4. PART NUMBER : SFP006 | | |

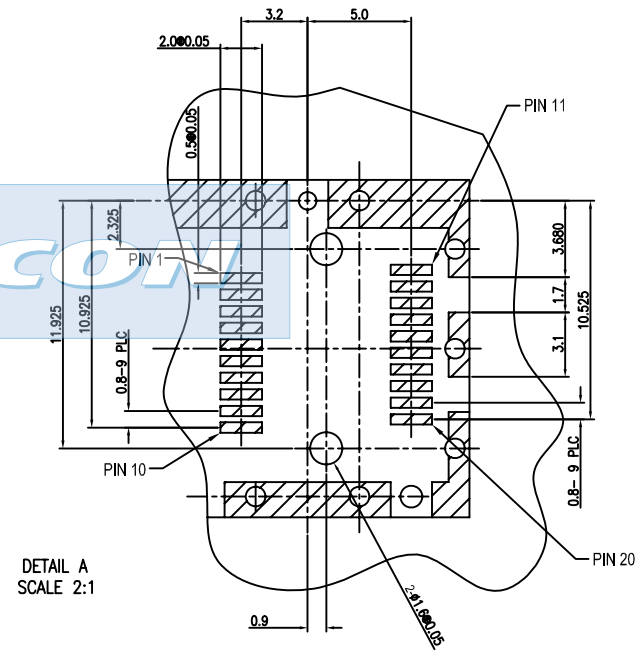
DETACHED LISTS	← MM (INCH) →	DFTD JERRY	DATE 04/18/07
	TOLERANCES EXCEPT AS NOTED	CHKD ANDY	DATE 04/18/07
	MM	MFO	DATE
	.0 ±0.20 ±	APPVL ALANN	DATE 04/18/07
	.00 ±0.15 ±	MATERIAL :	
.000 ±0.075 ±	QT'Y :		
ANGLES ±	FINISH :		
THIRD ANGLE PROJECTION	SCALE :		

Part Number: 0550-0001			
TITLE			
SFP CAGE 1 PORT			
DRAWING NO. SFP-006		SIZE	REV
/PART NO. SEE NOTE		A3	0
DO NOT SCALE DRAWING		SHEET X	OF Y

REVISION RECORD				
REV	ECO	DESCRIPTION	DRFT	CHKD



PCB LAYOUT THICKNESS=3.0mm (TOP VIEW)



DETAIL A
SCALE 2:1

DETACHED LISTS	MM (INCH)	DFTO JERRY DATE 04/18/07	Part Number: 0550-0001		
	TOLERANCES EXCEPT AS NOTED	CHKD ANDY DATE 04/18/07			
	MM	MFO DATE	TITLE SFP CAGE 1 PORT		
	.0 ±0.20 ±	APPVL ALANN DATE 04/18/07			
	.00 ±0.15 ±	MATERIAL :	DRAWING NO. SFP-006	SIZE A3	REV 0
.000 ±0.075 ±	ANGLES ±	/PART NO. SEE NOTE		DO NOT SCALE DRAWING	SHEET X OF Y
THIRD ANGLE PROJECTION	FINISH :	DO NOT SCALE DRAWING		SHEET X OF Y	
	SCALE :				

8

7

6

5

4

3

2

1

H
G
F
E
D
C
B
A