

MULTI CONTACT CRIMP TERMINAL



2869 & 2870 SERIES. 2.54mm(0.100"). Lateral Latch

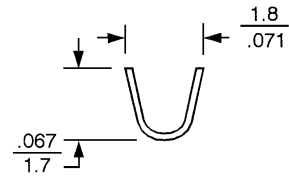
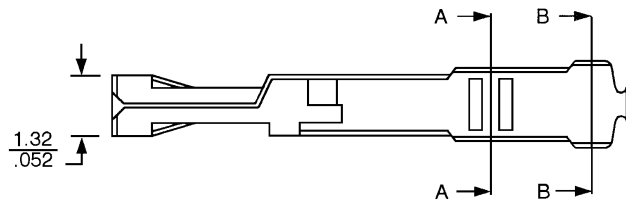
Features

- Accommodates wire ranges AWG 22-24
- Material: Brass and Phosphor Bronze
- Mates with 2866 series socket
- Dual beam, fully enclosed box contact with locking lance
- Insulation Diameter: 1.63mm(0.063") maximum

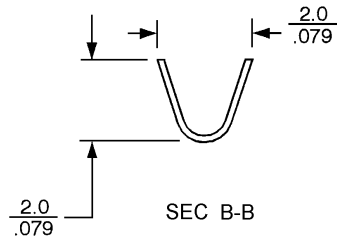
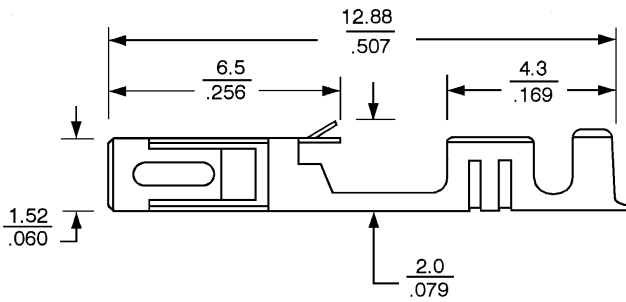
Dimensional Information

Ordering and Dimensional Information

Reel Quantity	Part Number	Material	Wire Ranges	Insulation Diameter
10,000 (Reel)	2869 - 3002	Brass	AWG 22 - 24	1.63 (0.063") Max.
Loose Piece	2869 - 3003	Brass	AWG 22 - 24	1.63 (0.063") Max.
10,000 (Reel)	2870 - 3002	Phosphor Bronze	AWG 22 - 24	1.63 (0.063") Max.
Loose Piece	2870 - 3003	Phosphor Bronze	AWG 22 - 24	1.63 (0.063") Max.



SEC A-A



SEC B-B