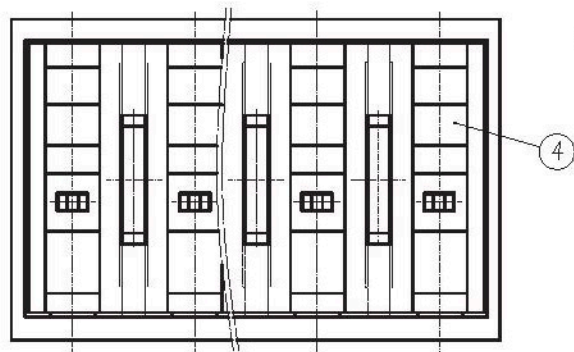


Normal Geometric Tolerancing				
	-	//	≡	⊥
0 to 100	0.2		0 to 10	0.2
over 100 to 150	0.3		over 10	0.3
over 150	0.5			

Total Pitch Tolerances	Normal dimension Tolerances
0<U≤30	±0.20
30<U≤53	±0.25
53<U≤70	±0.30
70<U≤90	±0.35
90<U≤115	±0.44
115<U≤150	±0.55



NOTES 1:

- UL Standard :
- 1.Rating: 300V 12A
 - 2.Insulation Withstands Voltage: AC 2500V at 1 minute
 - 3.Using Temperature Range: -40°C~+115°C
 - 4.Screw Torque Value: 0.2N•m
 - 5.Suitable Electric Wire: AWG 30~16

IEC Standard:

- 1.Rating: 250V 12A
- 2.Rate Impulse Voltage: 2500V
- 3.Insulation Resistance: 500MΩ or more at DC500V
- 4.Material Group: I
- 5.Pollution Degree: 2
- 6.Overtoltage Category: III
- 7.Using Temperature Range: -40°C~+105°C
- 8.Screw Torque Value: 0.2N•m
- 9.Suitable Electric Wire: 0.5~1.5mm²

NOTES 2:

- 1.RoHS compliance
- 2.Strip Length: 5~6mm

P	2	3	4	5	6	7	8	9	10	11	12	13
U	3.81	7.62	11.43	15.24	19.05	22.86	26.67	30.48	34.29	38.10	41.91	45.72
V	7.62	11.43	15.24	19.05	22.86	26.67	30.48	34.29	38.10	41.91	45.72	49.53
P	14	15	16	17	18	19	20	21	22	23	24	
U	49.53	53.34	57.15	60.96	64.77	68.58	72.39	76.20	80.01	83.82	87.63	
V	53.34	57.15	60.96	64.77	68.58	72.39	76.20	80.01	83.82	87.63	91.44	

ITEM	NAME OF PART	MATERIAL	NOTES
5	SOLDER PIN	COPPER-ALLOY	Tin Plated
4	COVER	PA	UL94-V0 GREEN
3	WIRE CAGE	COPPER-ALLOY	M2/Ni plated
2	SCREW	STEEL	M2/Zn plated
1	HOUSING	PA	UL94-V0 GREEN

DWG.	L.W	DATE	14.11.26	UNITS	MM	SHEET/OF	1 / 1
CHK.		DATE		SCALE	6:1		
APP.		DATE		NAME	BCEK381A-xxP		
				DWG NO.	SP-03-EK381AP0		

4			
REV.	CONTENT	CHK.	DATE

