

# S/ ROW DUAL BODY VERTICAL PIN HEADER



## 1061 SERIES. 1.00 mm (0.039") pitch.

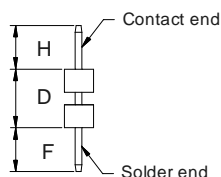
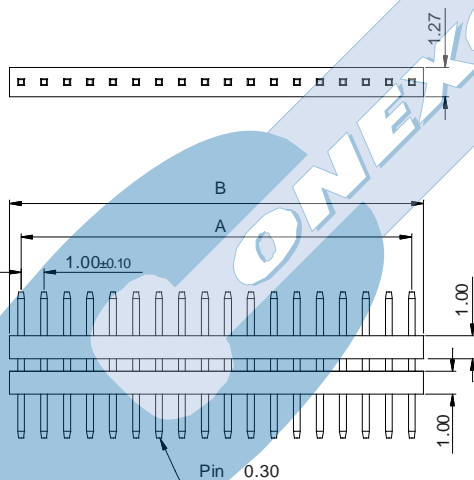
### General Features

- Available in 2 through 40 circuits
- Mates with sockets 1.00 mm. pitch 1065, 1066 and 1067 series
- 0,30 mm square pin with different plating contact area
- Available with different pin length
- Contact sales office

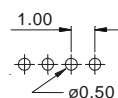
### Materials

- Insulator: Polyester LCP UL 94 V-0
- Contact: Phosphor bronze
- Operating temperature: -40°C to +105°C
- RoHS compliant

### Dimension Information



### RECOMMENDED HOLE PATTERN

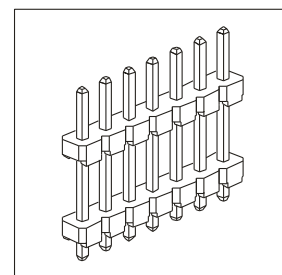


### Electrical Features

- Voltage rating: < 100V
- Current rating: < 1 A
- Contact resistance: < 20 mΩ
- Dielectric withstanding Voltage: 300 V AC/minute
- Insulation resistance: >1000 MΩ
- Capacitance: < 2 pF at 1 KHz

### Mechanical Features

- Pin retention force to insulator: > 0,10 Kg
- Durability: 50 cycles



### Ordering Information:

**1061 - T- XX- C**  
1 2 3 4

#### 1. Connector Series

#### 2. (T) Contact Plating

- T = 2. Tin plated
  - T = 3. Gold flash over nickel
- Recommended Finish

- T = 5. 15μ" gold over nickel
- T = 6. 30μ" gold over nickel

#### 3. (XX) Number of circuits

- Available in 2 through 40 circuits

#### 4. (C) Pin Dimensions

- C = 1. H = 1.90 mm.; D = 2.55 mm.; F = 1.90 mm.

### Dimensions: (In mm.)

A = 1.00 x (XX\*-1)

B = 1.00 x (XX\*)

\* XX (Number of circuits)