

# SINGLE ROW CRIMP CONNECTOR HOUSING



## 1080 SERIES. 10.00/8.00 (0.394/0.315")mm. pitch.

### General Features

- Available in 2 through 6 circuits
- Mates with round pin 1081 Series
- Polarized
- Use crimp terminal 1083
- With molded pull tab

### Materials

- Insulator: Nylon 66 UL 94 V-0
- Operating temperature: -40°C to +85°C
- RoHS compliant

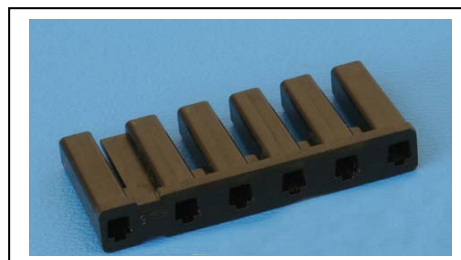
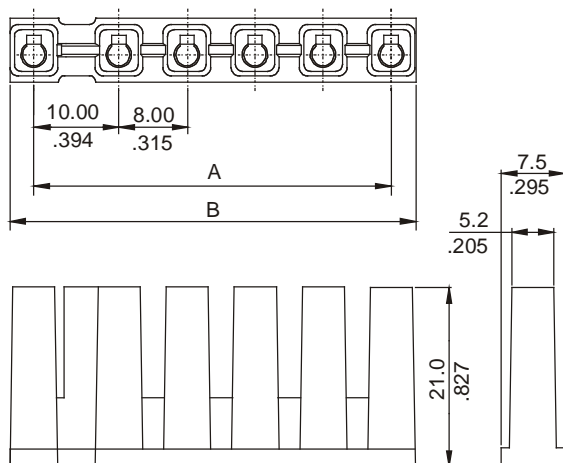
### Electrical Features

- Voltage rating: < 250V
- Current rating: < 5 A
- Contact resistance: < 20 mΩ
- Dielectric withstanding voltage: 1500 V AC/minute
- Insulation resistance: >1000 MΩ

### Mechanical Features

- Contact retention force to the housing: > 2.00 Kgf
- Contact insertion force to the housing: < 1.00 Kgf/pin
- Withdrawal force from header: < 0.20 Kgf/pin
- Durability: 25 cycles

### Dimension Information



### Ordering Information:

**1080 - 2- XX- 1**  
1                      2                      3

#### 1. Connector Series

#### 3. (XX) Number of circuits

- Available in 2 through 6 circuits

### Dimensions: (In mm.)

$$A = 8.00 \times (XX - 2) + 10$$

$$B = 8.00 \times (XX - 2) + 15.50$$

\* XX (Number of circuits)