

SIDE ENTRY SMT MALE CONNECTOR



1334 SERIES. 1.27 mm. (0.050") pitch.

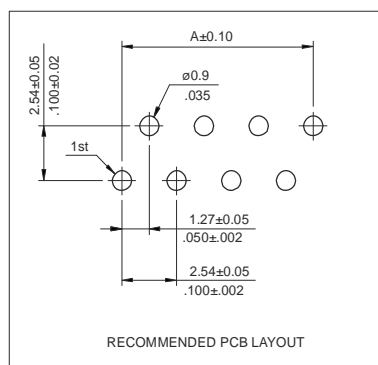
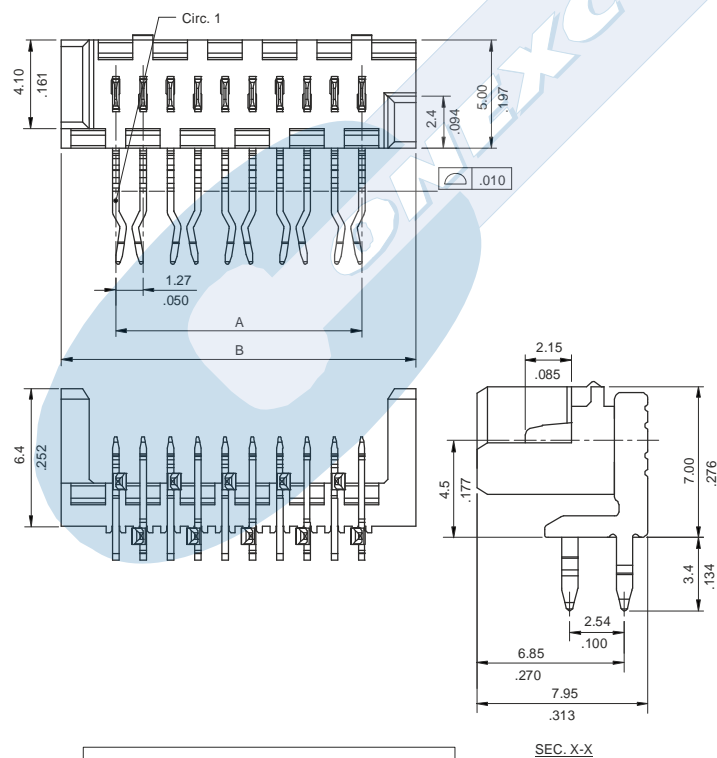
General Features

- Available in 4 through 26 circuits
- Mates with 1.27 mm. IDC connectors 1330 series
- Allows connections cable to PCB

Materials

- Insulator: High temperature plastic UL 94V-0
- Terminal: Phosphor bronze
- Operating temperature. -40°C to +105°C
- RoHS compliant

Dimension Information



Electrical Features

- Voltage rating: < 250V
- Current rating: < 1.20 A
- Contact resistance: < 15 mΩ
- Dielectric withstanding Voltage: 750 V AC/minute
- Insulation resistance: >1000 MΩ
- Capacitance: < 2 pF at 1 KHz

Mechanical Features

- Pin retention force to insulator: > 0,15 Kgf
- Mating force: > 0.50 Kgf per contact
- Un-mating force: > 0.10 Kgf per contact
- Durability: 25 cycles



Ordering Information:

1334 - T- XX- 1
1 2 3 4

1. Connector Series

2. (T) Contact Plating

- T = 2. Tin plated

3. (XX) Number of circuits

- Available in 4 through 26 circuits

Dimensions: (In mm.)

A = 1.27 x (XX-1)

B = 1.27 x (XX)+3.78

* XX (Nº of circuits)