

DUAL ROW CRIMP CONNECTOR HOUSING



2022 SERIES. 2.00 mm. (0.079") Pitch.

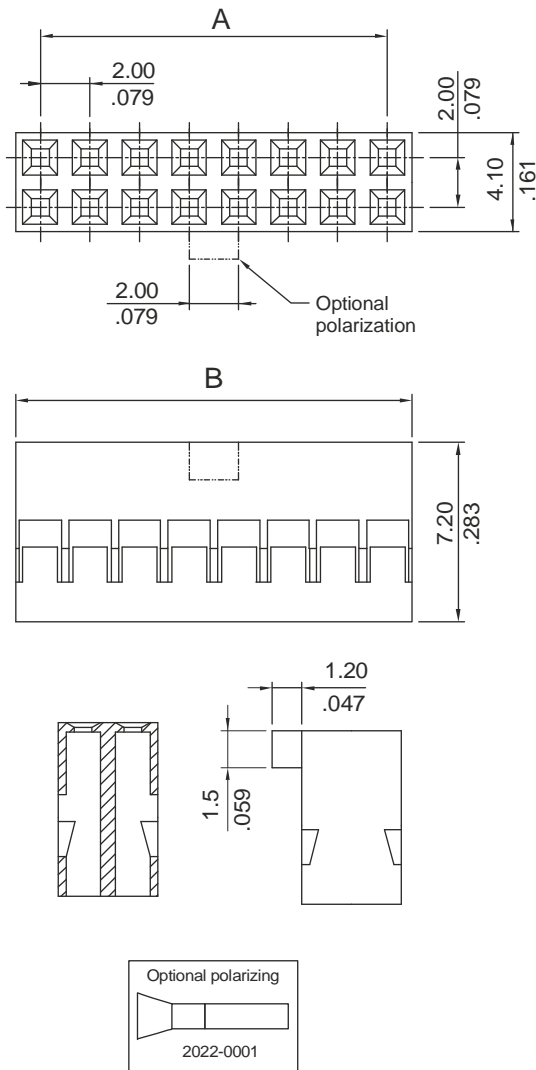
General Features

- Available in 4 through 40 circuits
- Mates with 2.00 mm pitch 0.50 mm square pin headers
- Optional polarizing key 2022-0001
- Use crimp terminal 2023

Materials

- Insulator: Nylon 6/6 UL 94 V-0
- Operating temperature. -25°C to +85°C
- RoHS compliant

Dimensional Information

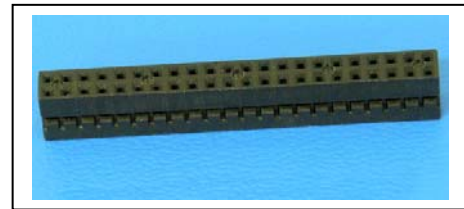


Electrical Features

- Voltage Rating: < 250 V
- Current Rating: < 25 A
- Contact resistance: < 20 mΩ
- Dielectric withstanding voltage: 800 V AC/minute
- Insulation Resistance: >100 MΩ

Mechanical features

- Contact retention force to the housing: > 1.00 Kgf
- Insertion force to header: < 0.50 Kgf/pin
- Withdrawal force from male: < 0.10 Kgf/pin
- Durability: 25 cycles



Ordering Information:

2022 - P- XX- 2
 1 2 3

1. Connector Serie

2. (P) Polarization Options

- P = 2. With polarization
- P = 3. Without polarization

3. (XX) Number Of Contacts

- Available in 1 through 15 circuits

DIMENSIONS

$$A = 2.00 \left(\frac{XX}{2} - 1 \right) \quad B = 2.00 \left(\frac{XX}{2} \right) + 0.26$$

(XX) = Number of circuits