

DUAL ROW CRIMP TYPE SOCKET

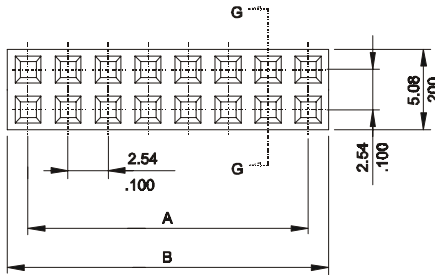


2652 SERIES. 2.54 x 2.54mm(0.100 X 0.100"). For PCB Solder

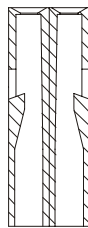
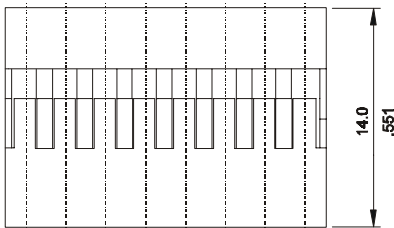
Features

- Available in 2 through 80 circuits
- Mates with 2.54mm(.100") dual row headers with 0.64mm square pin
- Accepts 2653 and 2663 crimp terminals
- For wire to wire and wire to PCB connection
- Material: Nylon 6/6 UL94V-2

Dimensional Information

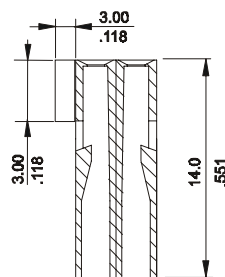
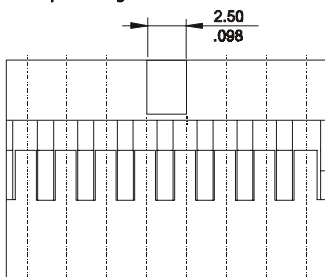


Without polarising



SEC. G-G

With polarising



SEC. G-G

Ordering and Dimensional Information

Circuit Size	Part Number		Dimensions	
	With polarising	W/O polarising	A	B
04	2652-2041	2652-3041	2,54(0,100)	5,08(0,200)
06	2652-2061	2652-3061	5,08(0,200)	7,62(0,300)
08	2652-2081	2652-3081	7,62(0,300)	10,16(0,400)
10	2652-2101	2652-3101	10,16(0,400)	12,70(0,500)
12	2652-2121	2652-3121	12,70(0,500)	15,24(0,600)
14	2652-2141	2652-3141	15,24(0,600)	17,78(0,700)
16	2652-2161	2652-3161	17,78(0,700)	20,32(0,800)
18	2652-2181	2652-3181	20,32(0,800)	22,86(0,900)
20	2652-2201	2652-3201	22,86(0,900)	25,40(1,000)
22	2652-2221	2652-3221	25,40(1,000)	27,94(1,100)
24	2652-2241	2652-3241	27,94(1,100)	30,48(1,200)
26	2652-2261	2652-3261	30,48(1,200)	33,02(1,300)
28	2652-2281	2652-3281	33,02(1,300)	35,56(1,400)
30	2652-2301	2652-3301	35,56(1,400)	38,10(1,500)
32	2652-2321	2652-3321	38,10(1,500)	40,64(1,600)
34	2652-2341	2652-3341	40,64(1,600)	43,18(1,700)
36	2652-2361	2652-3361	43,18(1,700)	45,72(1,800)
38	2652-2381	2652-3381	45,72(1,800)	48,26(1,900)
40	2652-2401	2652-3401	48,26(1,900)	50,80(2,000)
42	2652-2421	2652-3421	50,80(2,000)	53,34(2,100)
44	2652-2441	2652-3441	53,34(2,100)	55,88(2,200)
46	2652-2461	2652-3461	55,88(2,200)	58,42(2,300)
48	2652-2481	2652-3481	58,42(2,300)	60,96(2,400)
50	2652-2501	2652-3501	60,96(2,400)	63,50(2,500)
52	2652-2521	2652-3521	63,50(2,500)	66,04(2,600)
54	2652-2541	2652-3541	66,04(2,600)	68,58(2,700)
56	2652-2561	2652-3561	68,58(2,700)	71,12(2,800)
58	2652-2581	2652-3581	71,12(2,800)	73,66(2,900)
60	2652-2601	2652-3601	73,66(2,900)	76,20(3,000)
62	2652-2621	2652-3621	76,20(3,000)	78,74(3,100)
64	2652-2641	2652-3641	78,74(3,100)	81,28(3,200)
66	2652-2661	2652-3661	81,28(3,200)	83,82(3,300)
68	2652-2681	2652-3681	83,82(3,300)	86,36(3,400)
70	2652-2701	2652-3701	86,36(3,400)	88,90(3,500)
72	2652-2721	2652-3721	88,90(3,500)	91,44(3,600)
74	2652-2741	2652-3741	91,44(3,600)	93,98(3,700)
76	2652-2761	2652-3761	93,98(3,700)	96,52(3,800)
78	2652-2781	2652-3781	96,52(3,800)	99,06(3,900)
80	2652-2801	2652-3801	99,06(3,900)	101,60(4,000)