

CRIMP TERMINAL



3979 SERIES. 3.96 (0.156")/ 5.00 (0.197")/ 5.08 (0.200")/7.50 (0.295")mm. Pitch housing.

General Features

- Accommodates wire range AWG 18 through 26
- Use in housing 3.96 mm pitch 3940 series; housing 5.00 mm 5000 series, 5.08 mm 5080 and 7.50 mm 7500 series
- Flex contact with tin plated locking lance
- Maximum insulation diameter 2.48 mm (0.098")

Materials

- Contact: Phosphor bronze tin pre-plated
- Operating temperature -40°C to +105°C

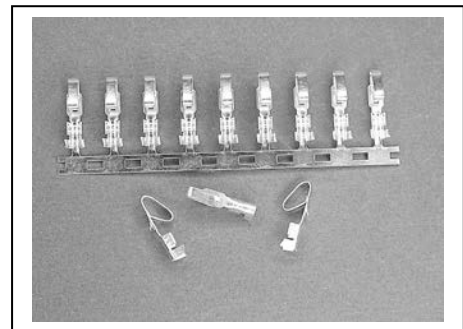
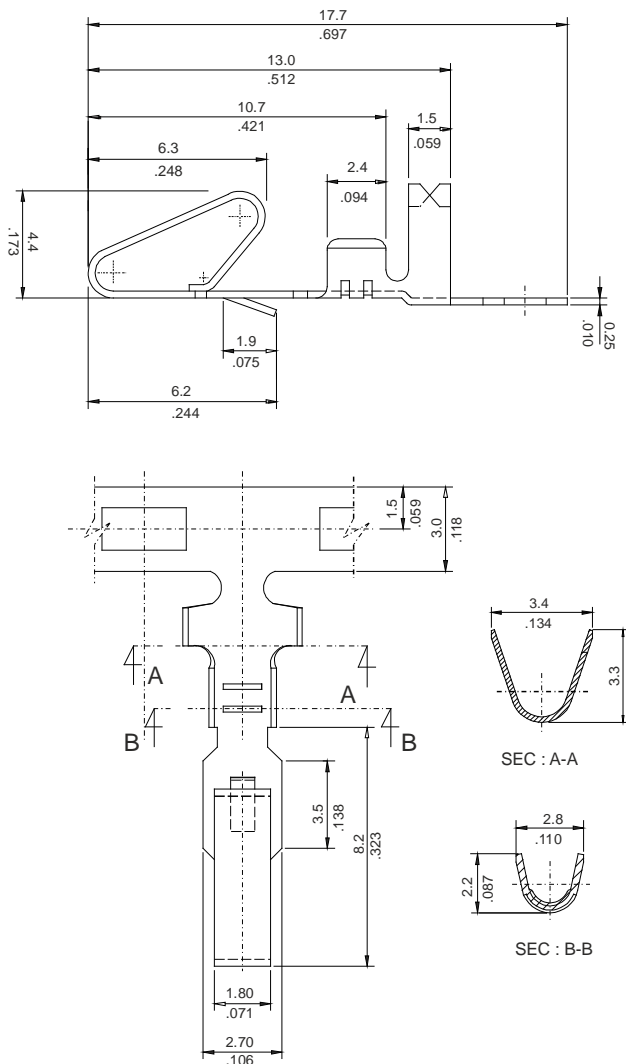
Electrical Features

- Current rating: < 7 A
- Contact resistance: < 20 mΩ
-

Mechanical Features

- Durability: 25 cycles
- Wire pull-out force:
 - 10.00 Kgf 18 AWG
 - 8.00 Kgf 20 AWG
 - 6.30 Kgf 22 AWG
 - 4.50 Kgf 24 AWG
 - 2.70 Kgf 26 AWG

Dimensional Information



3979 - T- 00- E
1 2

1. Terminal Serie

2. (T) Contact Plating

- T = 2. Tin plated

2. (E) Packing Options

- E = 0. Chain
- E = 1. Loose Piece