

SINGLE ROW VERTICAL PIN HEADER



5071 SERIES. 5.08 mm (0.200") pitch.

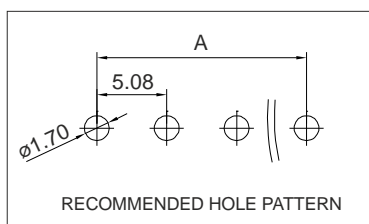
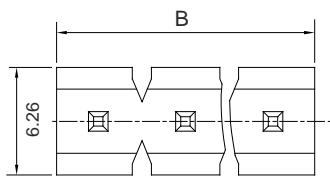
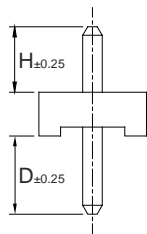
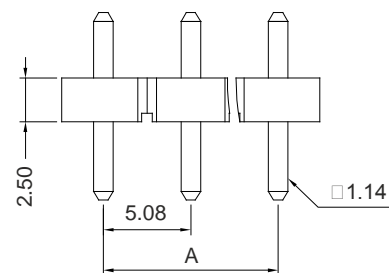
General Features

- Available in 2 through 20 circuits
- Mates with PCB sockets 5.08 mm. pitch 1507, 1508, 1509, 5069, 5070 and wire housing 5080 and 5081 series
- 1.14 mm. square pin
- Pin omit options are available in any circuits

Materials

- Insulator: Nylon 66 UL 94 V-2
- Contact: brass
- Operating temperature: -40°C to +105°C
- RoHS compliant

Dimensional Information

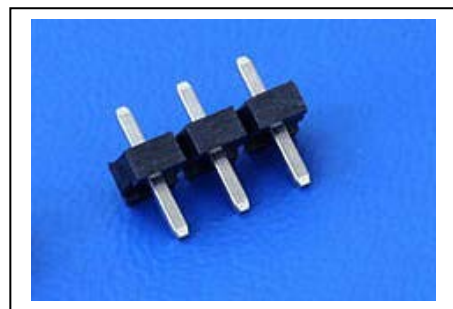


Electrical Features

- Voltage rating: < 250V
- Current rating: < 5 A
- Contact resistance: < 20 mΩ
- Dielectric withstanding voltage: 1500 V AC/minute
- Insulation resistance: >1000 MΩ

Mechanical Features

- Pin retention force to insulator: > 2.00 Kgf
- Durability: 25 cycles



Ordering Information:

5071 - **T**- **XX**- **C**
 1 2 3 4

1. Connector Series

2. (T) Contact Plating

- T = 2. Tin plated
Recommended Finish

3. (XX) Number of circuits

- Available in 2 through 20 circuits

5. (C) Pin Dimensions

- C = 1. Dim. H= 3.80 mm. ; D = 4.55 mm.
- C = 2. Dim. H=19.50 mm. ; D = 11.00 mm.
- C = 3. Dim. H=14.20 mm. ; D = 3.00 mm.
- C = 4. Dim. H=21.50 mm. ; D = 11.00 mm.

Dimensions: (In mm.)

A = 5.08 x (XX*-1)

B = 5.08 x (XX*)

* XX (Number of circuits)