

SINGLE ROW CRIMP CONNECTOR HOUSING



7500 SERIES. 5.00 mm (0.197") pitch.

General Features

- Available in 2, through 15 circuits
- Mates with pin headers 7501, 7502, 7503, 7504, 7517 and 7518 series
- Polarised with locking ramp
- Use crimp terminal 3979 and 3932

Materials

- Insulator: Nylon 66 UL 94 V-0
- Operating temperature: -40°C to +105°C
- RoHS compliant

Electrical Features

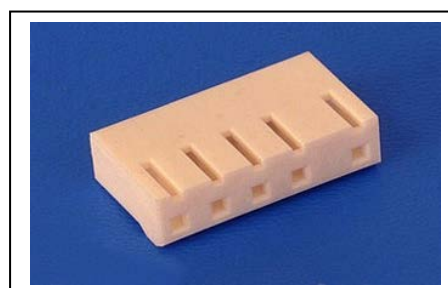
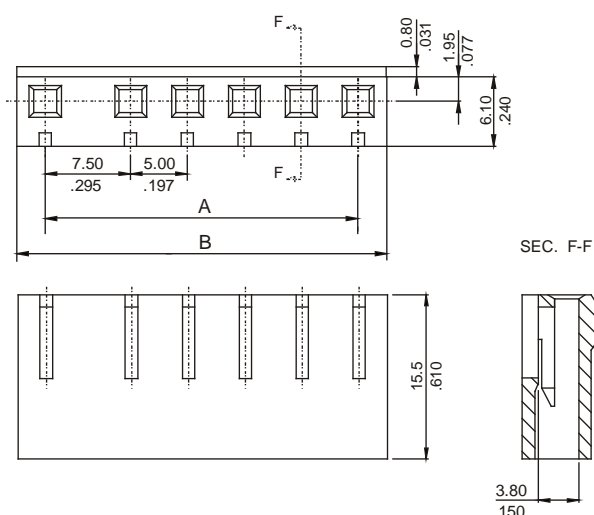
- Voltage rating: < 250V
- Current rating: < 5 A
- Contact resistance: < 20 mΩ
- Dielectric withstanding voltage: 1500 V AC/minute
- Insulation resistance: >1000 MΩ

Mechanical Features

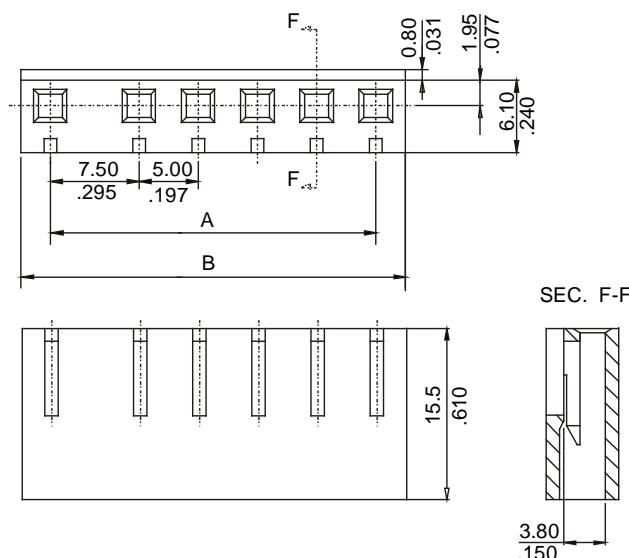
- Contact retention force to the housing: > 2.00 Kgf
- Insertion force to header: < 1.25 Kgf/pin
- Insertion force to header: < 2.00 Kgf/pin
- Withdrawal force from header: < 0.50 Kgf/pin
- Durability: 25 cycles

Dimension Information

With locking ramp:



Without locking ramp:



Ordering Information:

7500 - P- XX- 1

1 2 3

1. Connector Series

2. (P) Polarising options

- P = 2. With locking ramp
- P = 3. Without locking ramp

3. (XX) Number of circuits

- Available in 2 through 15 circuits

Dimensions: (In mm.)

A = 5.00 x (XX-2) + 7.50

B = 5.00 x (XX*) + 2.50

* XX (Number of circuits)