

# SINGLE ROW STRAIGHT PIN HEADER



## 7501 SERIES. 7.50/5.00 mm (0.295/0.197") pitch.

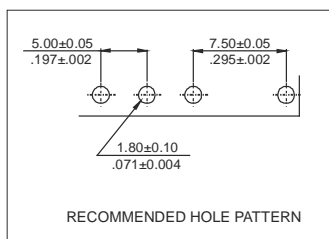
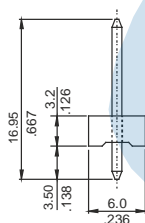
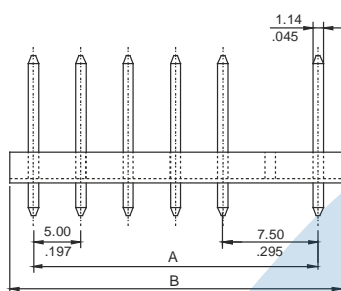
### General Features

- Available in 2 through 15 circuits
- Mates with wire housing 7500 series
- 1.14 mm. square pin
- With standoff to minimise flux retention
- Consult Sales Office

### Materials

- Insulator: Glass filled Polyester UL 94 V-2
- Contact: brass
- Operating temperature: -40°C to +85°C
- RoHS compliant

### Dimensional Information

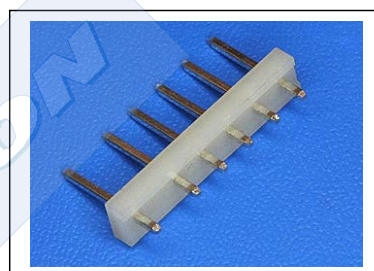


### Electrical Features

- Voltage rating: < 250V
- Current rating: < 5 A
- Contact resistance: < 20 mΩ
- Dielectric withstanding voltage: 1500 V AC/minute
- Insulation resistance: >1000 MΩ

### Mechanical Features

- Pin retention force to insulator: > 0,50 Kg
- Durability: 25 cycles



### Ordering Information:

**7501 - T- XX- 1**  
1 2 3

#### 1. Connector Series

#### 2. (T) Contact Plating

- T = 2. Tin plated  
Recommended Finish

#### 3. (XX) Number of circuits

- Available in 2 through 15 circuits

Dimensions: (In mm.)

A = 5.00 x (XX\*-2) + 7.50

B = 5.00 x (XX\*) + 2.50

\* XX (Number of circuits)