

CRIMP TYPE D-SUB RECEPTACLE



8003 SERIES. Crimp Type D-Sub

Features

- Available in 9, 15, 25, 37 and 50 circuits
- Insulator Material: Glass filled polyester UL 94V-0
- Colour: Black
- Can be used with 8502 and 8504 crimp terminal
- Shell: Steel, tin plated as standard
- Optional: #4-40 UNC hexagonal standoff or clinch nuts
- Other options: Hoods, mounting screw and accessories
- For other options consult the Sales Office

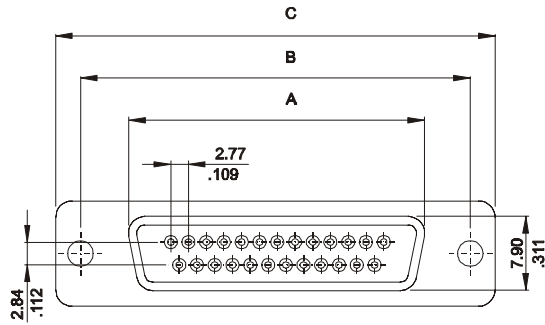
Dimensional Information

Ordering and Dimensional Information

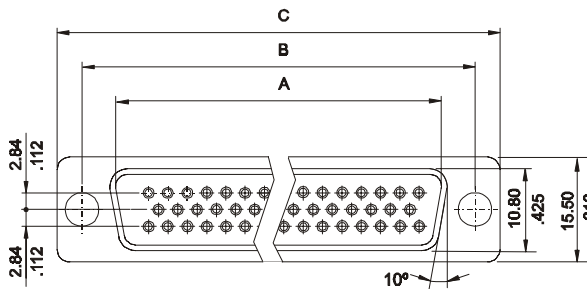
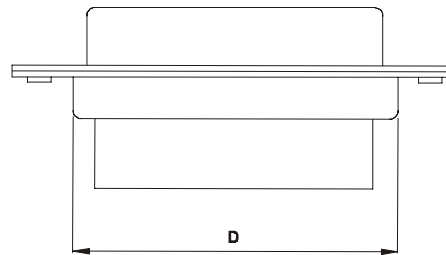
Unit: mm. Inch.	Circuit Size	Part Number	Dimensions			
			A	B	C	D
	9	8003 - 209C	16.33(0.643)	24.99 (0.984)	30.81 (1.213)	19.23 (0.757)
	15	8003 - 215C	24.66 (0.971)	33.32 (1.312)	39.14 (1.541)	27.56 (1.085)
	25	8003 - 225C	38.38 (1.511)	47.04 (1.852)	53.04 (2.088)	41.28 (1.625)
	37	8003 - 237C	54.84 (2.159)	63.50 (2.500)	69.32 (2.729)	57.73 (2.273)
	50	8003 - 250C	52.43 (2.064)	61.11 (2.406)	66.93 (2.635)	55.12 (2.170)

C = Hardware Options

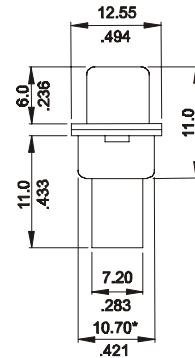
- C = 1. Standard with 3.05mm(.012") dia. mount hole
- C = 2. Version T2
- C = 3. Version T4
- C = 4. Version D2



9 to 37 Circuits



50 CIRCUITS



* For 50 circuits this dimension is 13.50 mm.

C = Hardware Options

