

5.33mm RIGHT ANGLE D-SUB RECEPTACLE



8005 SERIES. For PCB Solder. Low Profile

Features

- Available in 9 and 25 circuits
- Insulator Material: Glass filled polyester UL 94V-0
- Contact Material: Phosphor Bronze
- Different plating options are available
- Shell: Steel, tin plated as standard
- Standard connector C = 1 (Riveted ground hooks with #4-40 UNC open)
- For other options consult the Sales Office

Dimensional Information

Ordering and Dimensional Information

Unit: $\frac{\text{mm.}}{\text{Inch.}}$

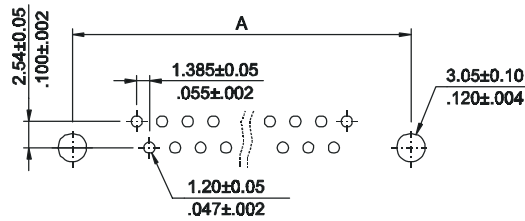
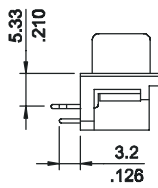
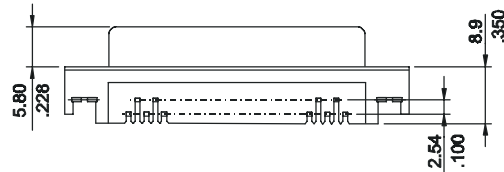
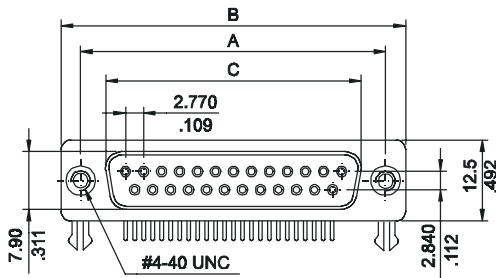
Circuit Size	Part Number	Dimensions		
		A	B	C
9	8005 - T09C	25.00 (0.984)	30.80 (1.213)	16.30 (0.642)
25	8005 - T25C	47.04 (1.852)	53.10 (2.091)	38.30 (1.508)

T = Contact Plating

- T = 3. Gold flash over 50 μ " nickel
- T = 4. 10 μ " gold over 50 μ " nickel
- T = 5. 15 μ " gold over 50 μ " nickel
- T = 6. 30 μ " gold over 50 μ " nickel

C = Hardware Options

- C = 1. Riveted ground hooks pre-loaded #4.40 UNC Hexagonal screws
- C = 0. Riveted ground hooks with #4.40 UNC open



RECOMMENDED HOLE PATTERN