

# 8.10mm FOOTPRINT EMI R/A D-SUB PLUG



## 8006 SERIES. With Ferrite. For PCB Solder. Right Angle D-Sub Plug

### Features

- Available in 9, 15, 25 and 37 circuits
- Insulator Material: Glass filled polyester UL 94V-0
- Contact Material: Copper alloy with different plating
- Ideal for applications of high frequency (100-300 Mhz.) and high speed transmission of digital signals
- Shell: Steel, tin plated as standard
- Standard connector C = 1 (Riveted ground hooks with #4-40 UNC open
- Impedance: 30 Ω for 25 MHz. and 60 Ω for 100 MHz.
- For other options consult the Sales Office

### Dimensional Information

### Ordering and Dimensional Information

Unit:  $\frac{\text{mm.}}{\text{Inch.}}$

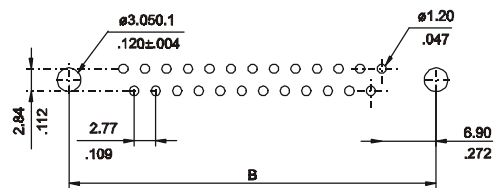
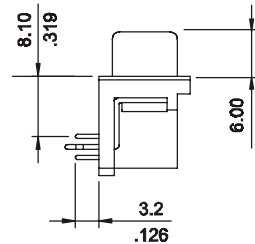
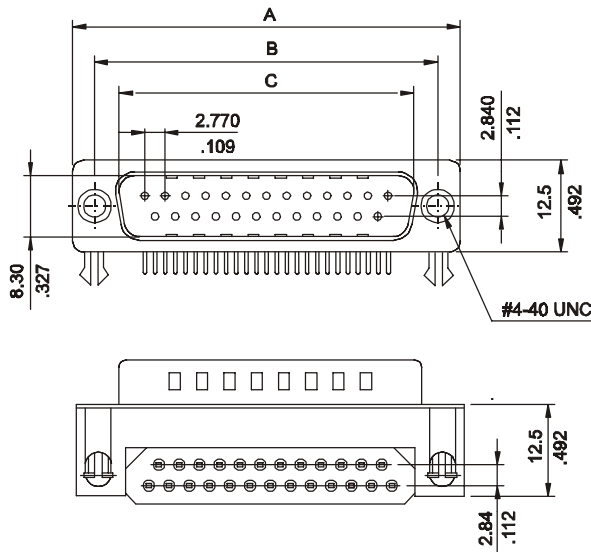
Circuit Size	Part Number	Dimensions		
		A	B	C
9	8006 - T09C	30.80 (1.213)	25.00 (0.984)	16.92 (0.666)
15	8006 - T15C	39.20 (1.543)	33.30 (1.311)	25.25 (0.994)
25	8006 - T25C	53.10 (2.091)	47.10 (1.854)	38.96 (1.534)
37	8006 - T37C	69.40 (2.732)	63.50 (2.500)	55.42 (2.182)

### T = Contact Plating

- T = 3. Gold flash over 50μ" nickel
- T = 4. 10μ" gold over 50μ" nickel
- T = 5. 15μ" gold over 50μ" nickel
- T = 6. 30μ" gold over 50μ" nickel

### C = Hardware Options

- C = 1. Riveted ground hooks pre-loaded #4.40 UNC Hexagonal screws (standard)
- C = 0. Riveted ground hooks with #4.40 UNC open



RECOMMENDED HOLE PATTERN