

8.10mm FOOTPRINT EMI D-SUB RECEPTACLE



8007 SERIES. With Ferrite. For PCB Solder. Right Angle D-Sub Receptacle

Features

- Available in 9, 15, 25 and 37 circuits
- Insulator Material: Glass filled polyester UL 94V-0
- Contact Material: Copper alloy with different plating
- Ideal for applications of high frequency (100-300 Mhz.) and high speed transmission of digital signals
- Shell: Steel, tin plated as standard
- Standard connector C = 1 (Riveted ground hooks with #4-40 UNC open
- Impedance: 30 Ω for 25 MHz. and 60 Ω for 100 MHz.
- For other options consult the Sales Office

Dimensional Information

Ordering and Dimensional Information

Unit: $\frac{\text{mm.}}{\text{Inch.}}$

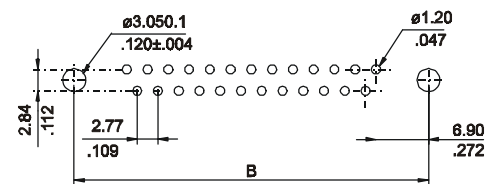
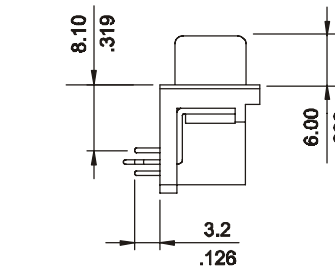
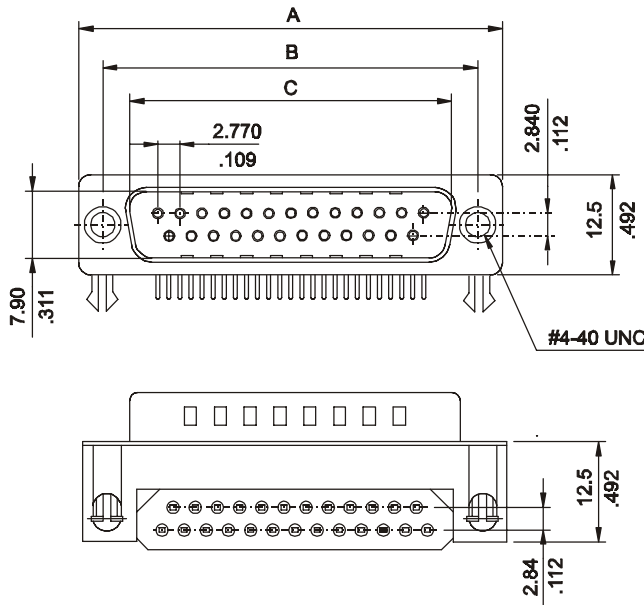
Circuit Size	Part Number	Dimensions		
		A	B	C
9	8007 - T09C	25.00 (0.984)	30.80 (1.213)	16.33 (0.643)
15	8007 - T15C	33.30 (1.311)	39.20 (1.543)	24.66 (0.971)
25	8007 - T25C	47.10 (1.854)	53.10 (2.091)	38.38 (1.511)
37	8007 - T37C	63.50 (2.500)	69.40 (2.732)	54.84 (2.159)

T = Contact Plating

- T = 3. Gold flash over 50μ" nickel
- T = 4. 10μ" gold over 50μ" nickel
- T = 5. 15μ" gold over 50μ" nickel
- T = 6. 30μ" gold over 50μ" nickel

C = Hardware Options

- C = 1. Riveted ground hooks pre-loaded #4.40 UNC Hexagonal screws (standard)
- C = 0. Riveted ground hooks with #4.40 UNC open



RECOMMENDED HOLE PATTERN