

D-SUB STACKED RIGHT ANGLE DIP SOLDER



8091 SERIES. For PCB Solder. Right Angle DIP Solder D-Sub

General Features

- Available in 9, 15, 25 and 37 ways
- Contact area: selective gold plating over nickel
- Solder area: tin plating over nickel
- Different hardware options. Contact sales office
- 3 Different separation between connectors

Materials

- Insulator: Glass-Filled Thermoplastic PBT, UL94V-0 rated
- Contact: Brass
- Shell : Steel, 100 μ Tin over 50 μ Min. Copper
- Clinch Nut : Brass, Nickel Plated
- Screwlock : Brass, Nickel Plated
- Boardlock: Brass, Tin Plated
- Operating temperature. -25°C to +85°C
- RoHS compliant

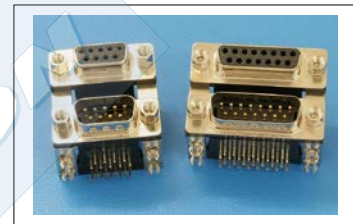
Dimension Information

Electrical Features

- Voltage rating: < 250 V
- Current rating: < 3 A
- Contact resistance: < 20 mΩ
- Dielectric withstanding Voltage: 500 V AC/minute
- Insulation resistance: >1000 MΩ

Mechanical Features

- Insertion force per contact: < 0.34 Kgf
- Withdrawal force per contact: < 0.22 Kgf
- Durability: 500 Cycles



(T) Plating Options
T = 3. Gold flash over 50μ nickel.
T = 5. 15μ" gold over 50μ" nickel
T = 6. 30μ" gold over 50μ" nickel

(D) Connector Body Height Option
D=1. E = 15.88mm
D=2. E = 19.05mm
D=3. E = 22.86mm

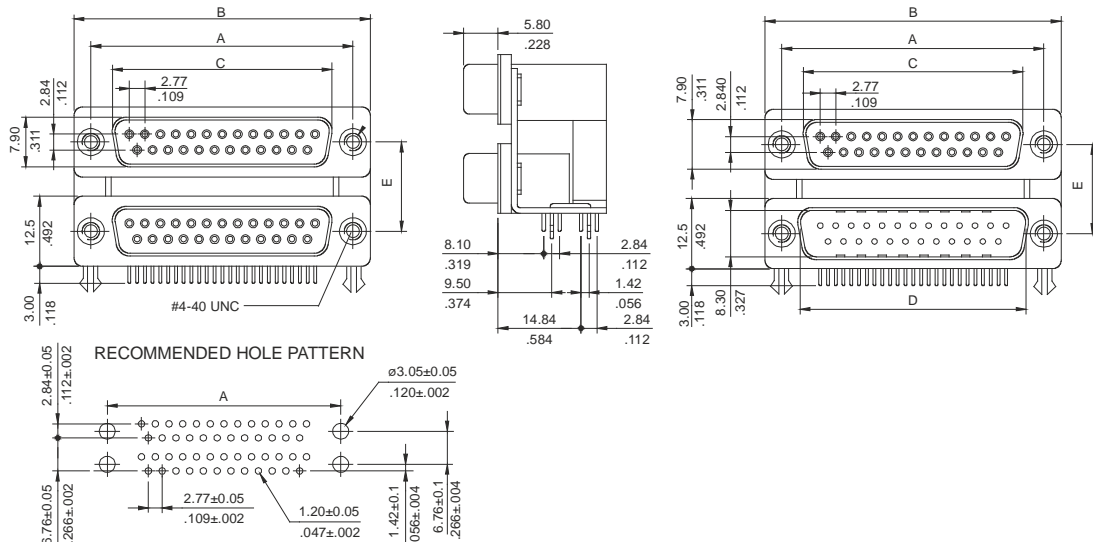
(E) Screw Lock Variations
E = 1. Riveted ground hooks pre-loaded #4.40 UNC Hex screws (standard)
E = 0. Riveted ground hooks with #4.40 UNC open

(B) Circuit Size
1. = 9 to 9 circuits
2. = 15 to 15circuits
3. = 25 to 25circuits
4. = 9 to 25circuits
5. = 25 to 9 circuits
6. = 25 to 15 circuits
7. = 37 to 37 circuits

(C) Connector Configuration		
	Upper con.	Inferior con.
1.	Receptacle	Receptacle
2.	Plug	Receptacle
3.	Receptacle	Plug
4.	Plug	Plug

8091 – T B C D E Series

Ordering Information
T. Plating Options
B. Circuit Size
C. Connector configuration
D. Connector body height option
E. Screw lock variations



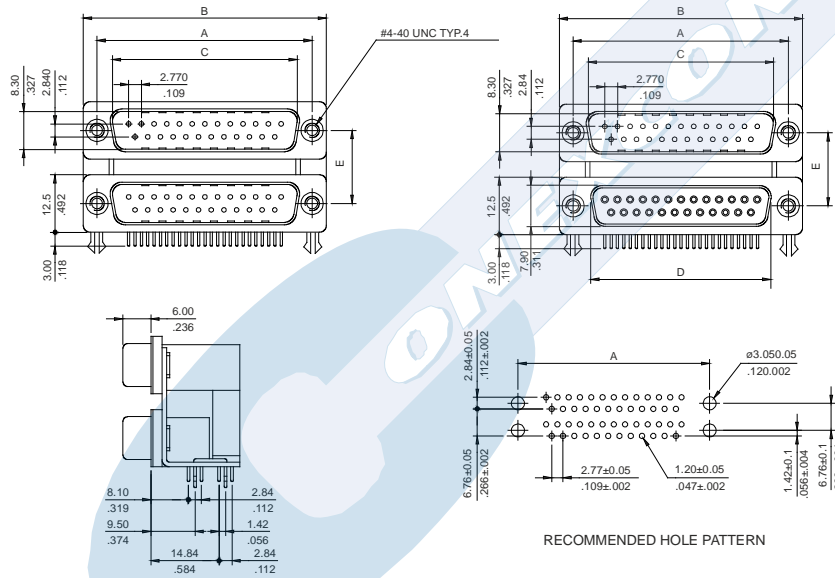
D-SUB STACKED RIGHT ANGLE DIP SOLDER



8091 SERIES. For PCB Solder. Right Angle DIP Solder D-Sub

● Plug to Plug and Plug to socket

Part Number	Dim. A	Dim. B	Dim. C	Dim. D	Dim. E
8091 – T1*11 (9V)	24.99 (0.984)	30.80 (1.213)	16.92 (0.666)	16.92 (0.666)	15.880 (0.625)
8091 – T2*11 (15V)	33.32 (1.312)	39.10 (1.539)	25.25 (0.994)	25.25 (0.994)	
8091 – T3*11 (25V)	47.04 (1.852)	53.00 (2.087)	38.96 (1.534)	38.96 (1.534)	
8091 – T7*11 (37V)	63.50 (2.500)	69.40 (2.732)	55.42 (2.182)	55.42 (2.182)	19.050 (0.750)
8091 – T1*21 (9V)	25.00 (0.984)	30.80 (1.213)	16.92 (0.666)	16.92 (0.666)	
8091 – T2*21 (15V)	33.32 (1.312)	39.10 (1.539)	25.25 (0.994)	25.25 (0.994)	
8091 – T3*21 (25V)	47.04 (1.852)	53.00 (2.087)	38.96 (1.534)	38.96 (1.534)	22.860 (0.900)
8091 – T7*21 (37V)	63.50 (2.500)	69.40 (2.732)	55.42 (2.182)	55.42 (2.182)	
8091 – T1*31 (9V)	24.99 (0.984)	30.80 (1.213)	16.92 (0.666)	16.92 (0.666)	
8091 – T2*31 (15V)	33.32 (1.312)	39.10 (1.539)	25.25 (0.994)	25.25 (0.994)	22.860 (0.900)
8091 – T3*31 (25V)	47.04 (1.852)	53.00 (2.087)	38.96 (1.534)	38.96 (1.534)	
8091 – T7*31 (37V)	63.50 (2.500)	69.40 (2.732)	55.42 (2.182)	55.42 (2.182)	



● Socket to Socket and Socket to plug

Part Number	Dim. A	Dim. B	Dim. C	Dim. D	Dim. E
8091 – T1*11 (9V)	25.00 (0.984)	30.80 (1.213)	16.92 (0.666)	16.33 (0.643)	15.880 (0.625)
8091 – T2*11 (15V)	33.32 (1.312)	39.10 (1.539)	25.25 (0.994)	24.66 (0.971)	
8091 – T3*11 (25V)	47.04 (1.852)	53.00 (2.087)	38.96 (1.534)	38.38 (1.511)	
8091 – T7*11 (37V)	63.50 (2.500)	69.40 (2.732)	55.42 (2.182)	54.80 (2.157)	19.050 (0.750)
8091 – T1*21 (9V)	25.00 (0.984)	30.80 (1.213)	16.92 (0.666)	16.33 (0.643)	
8091 – T2*21 (15V)	33.32 (1.312)	39.10 (1.539)	25.25 (0.994)	24.66 (0.971)	
8091 – T3*21 (25V)	47.04 (1.852)	53.00 (2.087)	38.96 (1.534)	38.38 (1.511)	22.860 (0.900)
8091 – T7*21 (37V)	63.50 (2.500)	69.40 (2.732)	55.42 (2.182)	54.80 (2.157)	
8091 – T1*31 (9V)	24.99 (0.984)	30.80 (1.213)	16.92 (0.666)	16.33 (0.643)	
8091 – T2*31 (15V)	33.32 (1.312)	39.10 (1.539)	25.25 (0.994)	24.66 (0.971)	22.860 (0.900)
8091 – T3*31 (25V)	47.04 (1.852)	53.00 (2.087)	38.96 (1.534)	38.38 (1.511)	
8091 – T7*31 (37V)	63.50 (2.500)	69.40 (2.732)	55.42 (2.182)	54.80 (2.157)	