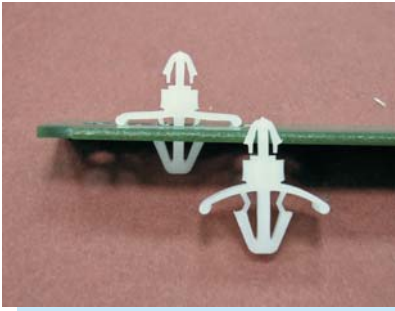


# SPACER SUPPORT

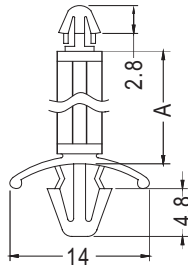
PLASTECH

1

- MATERIAL: NYLON 66 (UL)
- FLAME CLASS :94V-2
- COLOR: NATURAL
- UNIT: mm



P.C.B Ø3.0  
THICKNESS 1.2~1.7



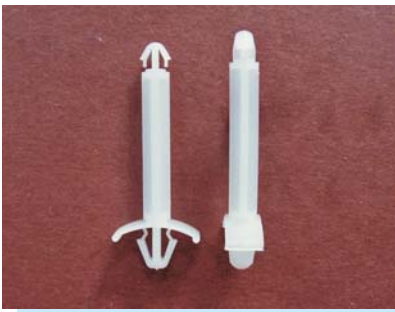
CHASSIS Ø4.8  
THICKNESS 0.8~2.2

PART NO	A	PACKAGE
LCBT-3	3.2	1000
LCBT-5	4.8	
LCBT-6	6.3	
LCBT-8	8.0	
LCBT-10	10.0	
LCBT-12	12.0	
LCBT-14	14.0	
LCBT-16	16.0	
LCBT-18	18.0	
LCBT-25	25.0	

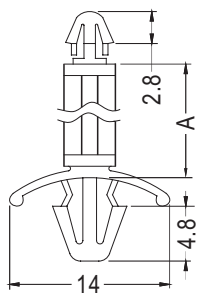
# SPACER SUPPORT

PLASTECH

- MATERIAL: NYLON 66 (UL)
- FLAME CLASS :94V-2
- COLOR: NATURAL
- UNIT: mm



P.C.B Ø3.5  
THICKNESS 1.2~1.7



CHASSIS Ø4.8  
THICKNESS 0.8~2.2

PART NO	A	PACKAGE
LCBU-3	3.2	1000
LCBU-5	5.0	
LCBU-6	6.3	
LCBU-8	8.0	
LCBU-10	10.0	
LCBU-12	12.0	
LCBU-14	14.0	
LCBU-16	16.0	
LCBU-18	18.0	
LCBU-25	25.0	

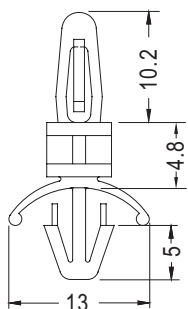
# SPACER SUPPORT

PLASTECH

- MATERIAL: NYLON 66 (UL)
- FLAME CLASS :94V-2
- COLOR: NATURAL
- UNIT: mm



P.C.B Ø4.0  
THICKNESS: T



CHASSIS Ø4.8  
THICKNESS 2.0~3.2

PART NO	P.C.B THICKNESS (T)	PACKAGE
LCSD-4.8	1.6	1000
LCSL-4.8	2.0~3.2	