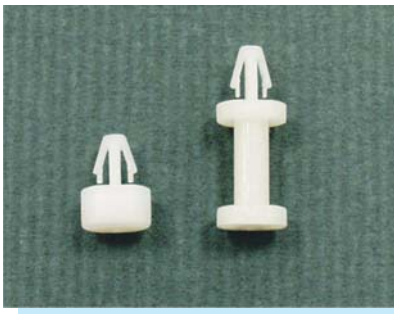
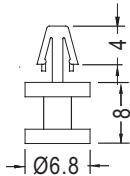


# SPACER SUPPORT

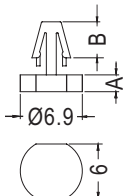
PLASTECH



P.C.B Ø3.0  
THICKNESS 2.1

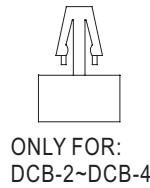
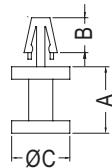


P.C.B Ø3.0  
THICKNESS 1.2~1.7



- MATERIAL: NYLON 66 (UL)
- FLAME CLASS :94V-2
- COLOR:NATURAL
- UNIT:mm

P.C.B Ø3.0  
THICKNESS 1.2~1.7

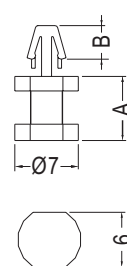


PART NO	PACKAGE
DCB-8(2)	1000

PART NO	A	B	PACKAGE
DCB-2D	2.0	3.5	2000
DCB-3D	3.0	3.7	
DCB-3.5D	3.5	4.0	

PART NO	A	B	C	PACKAGE
DCB-2	2.0	4.0	6.5	2000
DCB-2.5	2.5	4.0	6.5	
DCB-3	3.0	4.0	6.8	1000
DCB-3.5	3.5	4.0	6.8	
DCB-4	4.0	4.0	6.8	
DCB-5	5.0	4.0	6.0	
DCB-6	6.0	4.0	6.8	
DCB-6.5	6.5	4.0	6.0	
DCB-7	7.0	4.0	6.0	
DCB-8	8.0	4.0	6.8	
DCB-10	10.0	4.0	6.8	
DCB-15	15.0	4.0	6.0	

P.C.B Ø3.0  
THICKNESS 1.2~1.7



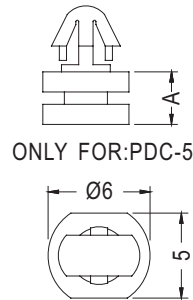
PART NO	A	B	PACKAGE
DCB-4D	4.0	3.6	1000
DCB-4.5D	4.5		
DCB-5D	5.0		
DCB-5.5D	5.5		
DCB-7D	7.0		
DCB-9D	9.0		
DCB-11D	11.0		
DCB-12D	12.0		
DCB-13D	13.0		
DCB-13D	13.0	4.0	
DCB-13D	13.0		

# SPACER SUPPORT

PLASTECH

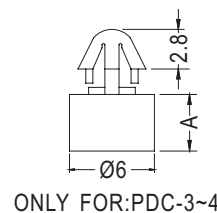


- MATERIAL: NYLON 66 (UL)
- FLAME CLASS :94V-2/94V-0
- COLOR:NATURAL
- UNIT:mm



ONLY FOR:PDC-4.5D~26D

P.C.B Ø3.5  
THICKNESS 1.2~1.7



ONLY FOR:PDC-3~4

PART NO	A	PACKAGE
PDC-3	3.0	2000
PDC-3.5	3.5	
PDC-4	4.0	
PDC-4.5D	4.5	
PDC-5	5.0	
PDC-5.5D	5.5	
PDC-6D	6.0	
PDC-6.5D	6.5	
PDC-7D	7.0	
PDC-13.5D	13.5	
PDC-26D	26.0	

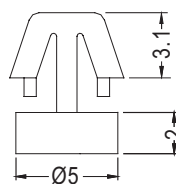
# SPACER SUPPORT

PLASTECH



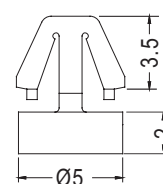
- MATERIAL: NYLON 66 (UL)
- FLAME CLASS :94V-2
- COLOR:NATURAL
- UNIT:mm

P.C.B Ø4.0  
THICKNESS 1.2~1.7



PART NO	PACKAGE
MC-2	2000

P.C.B Ø4.0  
THICKNESS 0.8~1.0



PART NO	PACKAGE
MC-2-1.2	2000