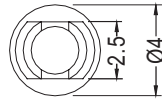
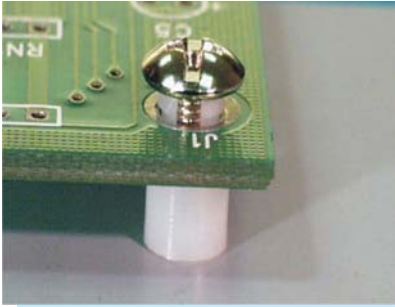
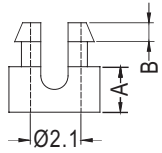


- MATERIAL: NYLON 66 (UL)
- FLAME CLASS :94V-2
- COLOR:NATURAL
- UNIT:mm



P.C.B Ø3.0
THICKNESS(T)

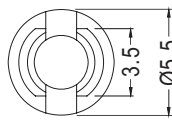
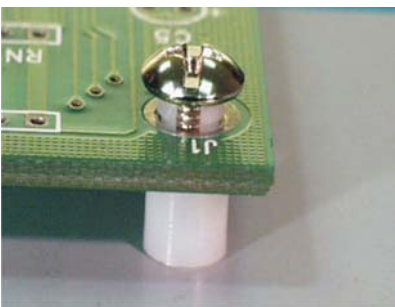


FOR M2 SCREW

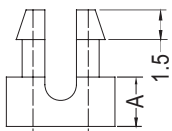
PART NO	A	B	THICKNESS(T)	PACKAGE
SS1-2	2.0	1.2	0.8~1.0	2000
SS1-2.5	2.5			
SS1-3	3.0			
SS1-3.5	3.5			
SS1-4	4.0			
SS1-4.5	4.5			
SS1-5	5.0			
SS1-5.5	5.5			
SS1-6	6.0			

PART NO	A	B	THICKNESS(T)	PACKAGE
SS1-2S	2.0	0.5	0.8~1.0	2000
SS1-2.5S	2.5			
SS1-3S	3.0			
SS1-3.5S	3.5			
SS1-4S	4.0			
SS1-4.5S	4.5			
SS1-5S	5.0			
SS1-5.5S	5.5			
SS1-6S	6.0			
SS1-2L	2.0			
SS1-2.5L	2.5			
SS1-3L	3.0			
SS1-3.5L	3.5			
SS1-4L	4.0			
SS1-4.5L	4.5			
SS1-5L	5.0			
SS1-5.5L	5.5			
SS1-6L	6.0			
SS1-8L	8.0			

- MATERIAL: NYLON 66 (UL)
- FLAME CLASS :94V-2
- COLOR:NATURAL
- UNIT:mm



P.C.B Ø4.0
THICKNESS(T)



FOR M2.6 SCREW

PART NO	A	B	THICKNESS(T)	PACKAGE
SS2-2.5S	2.5	2.7	1.6	2000
SS2-3S	3.0			
SS2-4S	4.0			
SS2-5S	5.0			
SS2-6S	6.0			
★SS2-2.5U	2.5			
SS2-2.5	2.5			
SS2-3	3.0	2.8	1.6~1.8	
SS2-4	4.0			
SS2-5	5.0			
SS2-5.4	5.4			
SS2-6	6.0			
★SS2-8	8.0			
★SS2-9.5	9.5			