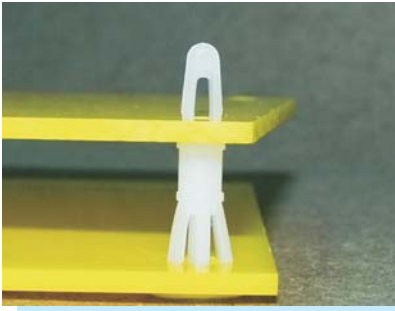


# SPACER SUPPORT

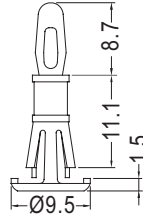
PLASTECH

1

- MATERIAL: NYLON 66 (UL)
- FLAME CLASS :94V-2
- COLOR:NATURAL
- UNIT:mm



P.C.B Ø3.2  
THICKNESS 1.6



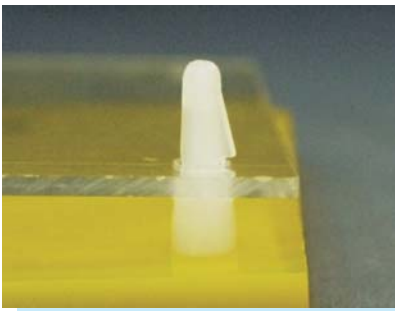
P.C.B Ø4.8  
THICKNESS 1.5~1.6

PART NO	PACKAGE
RCV-11.1	1000

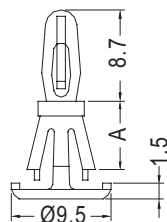
# SPACER SUPPORT

PLASTECH

- MATERIAL: NYLON 66 (UL)
- FLAME CLASS :94V-2
- COLOR:NATURAL
- UNIT:mm



P.C.B Ø3.2  
THICKNESS 1.2~1.7



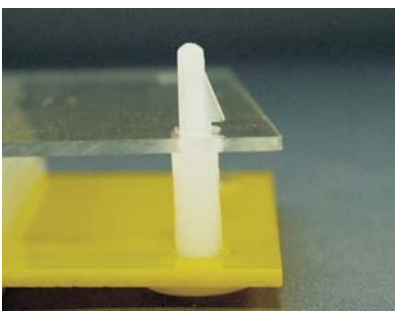
P.C.B Ø4.8  
THICKNESS 1.2~1.6

PART NO	A	PACKAGE
RCW-6.5	6.5	1000
★RCW-7.9	7.9	
RCW-9.7	9.7	
★RCW-11.1	11.1	
RCW-12.7	12.7	
★RCW-14.3	14.3	
★RCW-15.9	15.9	

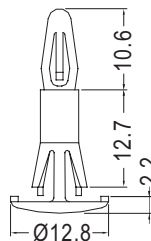
# SPACER SUPPORT

PLASTECH

- MATERIAL: NYLON 66 (UL)
- FLAME CLASS :94V-2
- COLOR:NATURAL
- UNIT:mm



P.C.B Ø4.0  
THICKNESS 1.2~1.7



P.C.B Ø5.5  
THICKNESS 1.0~1.5

PART NO	PACKAGE
RCR-12.7	1000