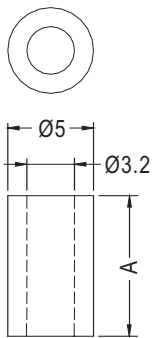
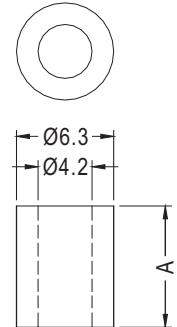
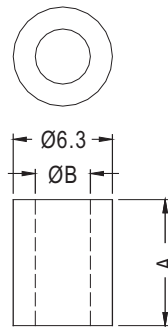
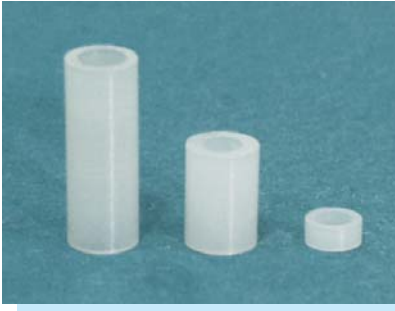


- MATERIAL: NYLON 66 (UL)
- FLAME CLASS :94V-2
- COLOR:NATURAL
- UNIT:mm



PART NO	A	PACKAGE
3-2	2.0	2000
3-2.5	2.5	
3-3	3.0	
3-3.3	3.3	
3-3.5	3.5	
3-4	4.0	
3-4.5	4.5	
3-5	5.0	
3-5.5	5.5	
3-6	6.0	
3-6.35	6.35	
3-7	7.0	
3-7.5	7.5	
3-8	8.0	
3-9	9.0	
3-9.5	9.5	
3-10	10.0	
3-10.5	10.5	
3-11	11.0	
3-12	12.0	
3-13	13.0	
3-13.6	13.6	
3-14	14.0	
3-15	15.0	
3-15.5	15.5	
3-16	16.0	
3-16.5	16.5	
3-16.8	16.8	
3-17	17.0	
3-17.5	17.5	
3-18	18.0	
3-19	19.0	
3-20	20.0	
3-21	21.0	
3-22	22.0	
3-23	23.0	
3-24	24.0	
3-25	25.0	
3-26	26.0	
3-27	27.0	
3-28	28.0	
3-29	29.0	
3-30	30.0	

PART NO	A	B	PACKAGE
★ 3.5-1.6	1.6	3.5	2000
3.5-2	2.0		
3.5-3	3.0		
3.5-3.5	3.5		
3.5-4	4.0		
3.5-4.5	4.5		
3.5-5	5.0		
3.5-6	6.0		
3.5-7	7.0		
3.5-7.5	7.5		
3.5-8	8.0		
3.5-9	9.0		
3.5-9.5	9.5		
3.5-10	10.0		
3.5-11	11.0		
3.5-12	12.0		
3.5-13	13.0		
3.5-14	14.0		
3.5-15	15.0		
3.5-15.5	15.5		
3.5-16	16.0		
3.5-17	17.0		
3.5-17.7	17.7		
3.5-18	18.0		
3.5-19	19.0		
3.5-20	20.0		
3.5-21	21.0		
3.5-22	22.0		
3.5-23	23.0		
3.5-24	24.0		
3.5-25	25.0		
3.5-26	26.0		
3.5-27	27.0		
3.5-28	28.0		
3.5-29	29.0		
3.5-30	30.0		
★ 3.5-35	35.0	3.7	1000

PART NO	A	PACKAGE
4-2	2.0	2000
4-3	3.0	
4-3.5	3.5	
4-4	4.0	
4-4.83	4.83	
4-5	5.0	
4-6	6.0	
4-7	7.0	
4-7.5	7.5	
4-8	8.0	
4-9	9.0	
4-9.5	9.5	
4-10	10.0	
4-11	11.0	
4-12	12.0	
4-12.7	12.7	
4-13	13.0	
4-14	14.0	
4-15	15.0	
4-16	16.0	
4-17	17.0	
4-18	18.0	
4-19	19.0	
4-20	20.0	
4-21	21.0	
4-22	22.0	
4-23	23.0	
4-24	24.0	
4-25	25.0	
4-26	26.0	
4-27	27.0	
4-28	28.0	
4-28.7	28.7	
4-29	29.0	
4-30	30.0	
4-40	40.0	1000