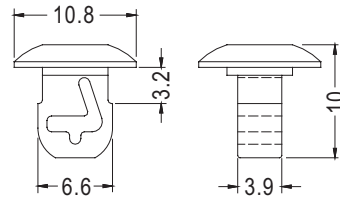
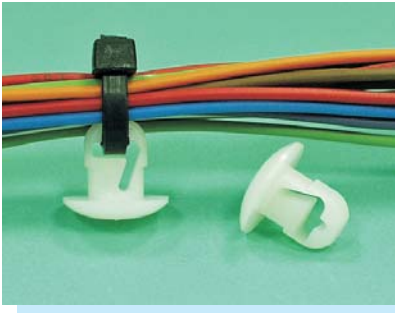


# CABLE TIE MOUNT

PLASTECH

- MATERIAL: NYLON 66 (UL)
- FLAME CLASS : 94V-2
- COLOR: NATURAL
- UNIT: mm



CHASSIS Ø6.4

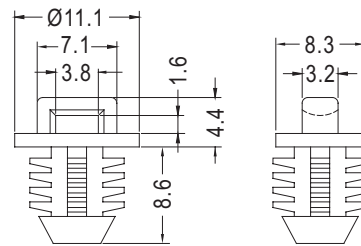
PART NO	PACKAGE
CCM-1	1000

# CABLE TIE MOUNT

PLASTECH

4

- MATERIAL: NYLON 66 (UL)
- FLAME CLASS : 94V-2
- COLOR: NATURAL
- UNIT: mm



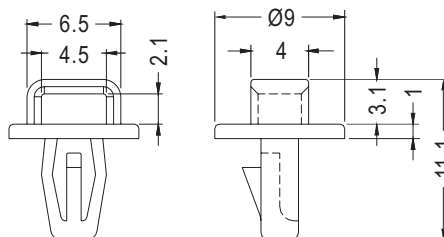
CHASSIS Ø7.9  
THICKNESS 6.4mm MIN.

PART NO	PACKAGE
CCMF-1	1000

# CABLE TIE MOUNT

PLASTECH

- MATERIAL: NYLON 66 (UL)
- FLAME CLASS : 94V-2
- COLOR: NATURAL
- UNIT: mm



P.C.B Ø4.0  
THICKNESS 1.6~2.0

PART NO	PACKAGE
CCMT-2	1000

