

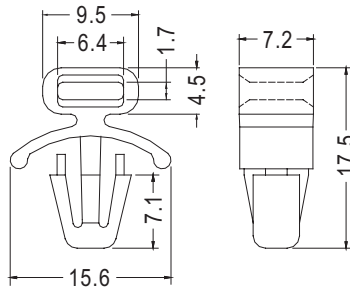
CABLE TIE MOUNT

PLASTECH



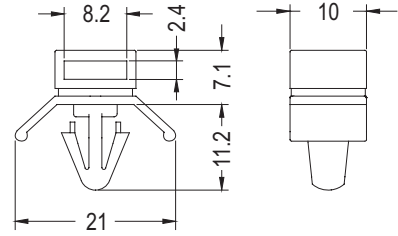
- MATERIAL: NYLON 66 (UL)
- FLAME CLASS :94V-2
- COLOR:NATURAL
- UNIT:mm

NEW



CHASSIS Ø6.4
THICKNESS 1.2~2.8

PART NO	PACKAGE
CCMW-1	1000



CHASSIS Ø6.2
THICKNESS 0.8~3.2

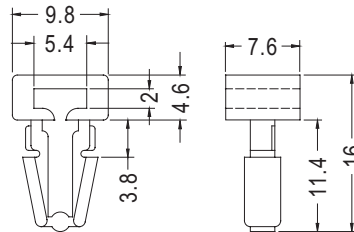
PART NO	PACKAGE
CCMW-2	1000

CABLE MOUNT

PLASTECH

4

- MATERIAL: NYLON 66 (UL)
- FLAME CLASS :94V-2
- COLOR:BLACK
- UNIT:mm



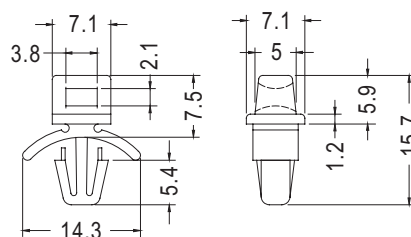
PANEL HOLE DIA 6.4
PANEL THICKNESS 3.17 MAX

PART NO	PACKAGE
CCMV-1	1000

CABLE TIE MOUNT

PLASTECH

- MATERIAL: NYLON 66 (UL)
- FLAME CLASS :94V-2
- COLOR:NATURAL
- UNIT:mm



CHASSIS Ø4.8
THICKNESS 0.8~2.0

PART NO	PACKAGE
CCME-1	1000