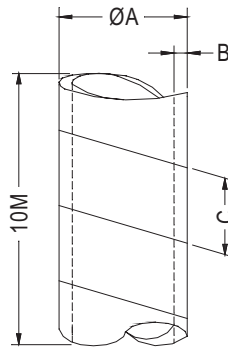
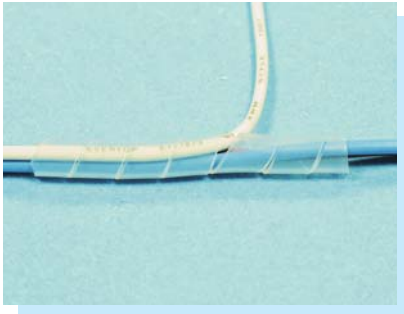


# SPIRAL WRAPPING BANDS

**PLASTECH**

- MATERIAL:PE
- COLOR:NATURAL
- UNIT:mm

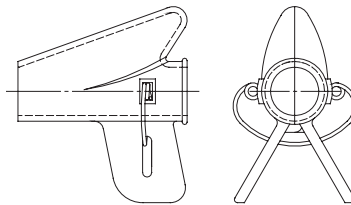


PART NO	A	B	C	PACKAGE
SWB-2	3.0	0.4	4.6	10M
SWB-3	4.0	0.5	7.6	
SWB-4S	5.0	0.5	8.5	
SWB-4	6.0	0.6	8.5	
SWB-6	8.0	0.7	13.0	
SWB-7.5	10.0	0.8	13.0	
SWB-9	12.0	0.85	15.0	
SWB-12	15.0	1.0	17.0	
SWB-16	19.0	1.2	19.0	
SWB-20	24.0	1.5	21.0	

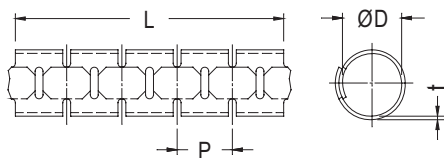
# FAST SPIRAL WRAPPING BAND AND CLAMP

**PLASTECH**

- SPIRAL WRAP MATERIAL:PE
- SPIRAL WRAP COLOR:NATURAL
- CLAMP MATERIAL:ABS
- UNIT:mm



PART NO	THE SUITABLE FOR FAST SPIRAL WRAPPING BAND
KST-08	KYST-8
KST-15	KYST-15
KST-20	KYST-20
KST-25	KYST-25

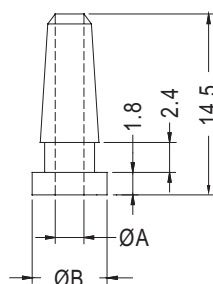


PART NO	INTERNAL ØD (mm)	MAX DIA (mm)	PITCH P(mm)	THICKNESS t(mm)	LENGTH (M)
KYST-8	8.0	10.0	10.0	0.8	5
KYST-15	15.0	16.0	14.0	0.8	5
KYST-20	20.0	23.0	17.0	0.9	5
KYST-25	25.0	29.0	20.0	1.0	5

# BUSHING

**PLASTECH**

- MATERIAL:TPE
- COLOR:BLACK
- UNIT:mm



PART NO	A	B	MOUNTING HOLE	PACKAGE
LGT-2	2.3	6.0	Ø4.0	1000
★LGT-6G	3.0	7.0	Ø4.8	