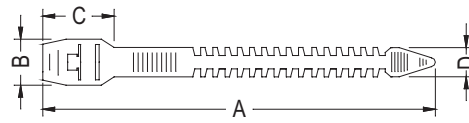


# STRAP TIES

PLASTECH

- ✦ MATERIAL:P.E
- ✦ COLOR:NATURAL/BLACK
- ✦ UNIT:mm

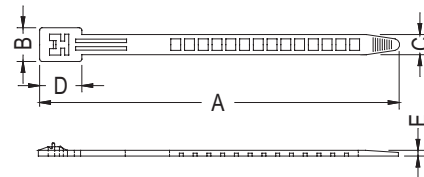


PART NO	A	B	C	D	PACKAGE
ST-2	135.0	15.8	21.4	10.0	500
ST-3	140.0	15.4	24.5	10.0	

# STRAP TIES

PLASTECH

- ✦ MATERIAL:PE/NYLON 66 UL94V-2
- ✦ COLOR:NATURAL/BLACK
- ✦ UNIT:mm

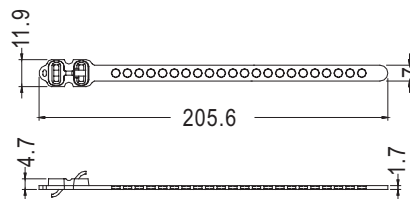


PART NO	A	B	C	D	E	PACKAGE
ST-1SN	157	15.0	8.6	18.3	1.0	500
ST-1	157	14.7	8.6	18.3	1.5	
ST-4	205	15.0	8.6	18.3	1.7	
ST-5	125	13.0	7.5	16.0	1.45	

# STRAP TIES

PLASTECH

- ✦ MATERIAL:TPE
- ✦ COLOR:BLUE
- ✦ UNIT:mm



PART NO	PACKAGE
ST-6	250

5