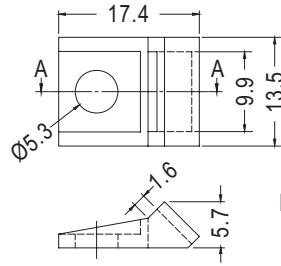
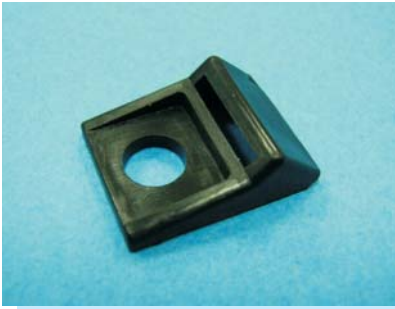


MOUNTING TAB

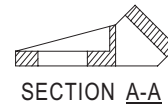
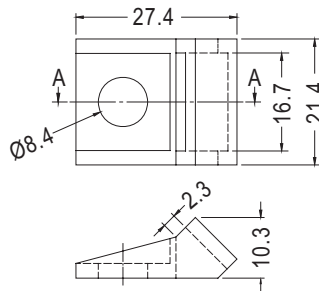
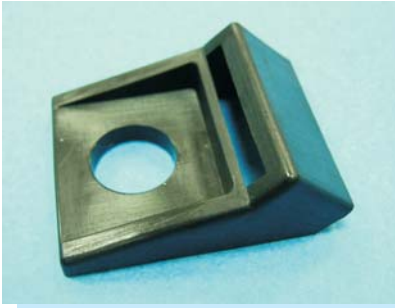
PLASTECH

- ✦ MATERIAL: NYLON 66 (UL)
- ✦ FLAME CLASS: 94V-2
- ✦ COLOR: BLACK
- ✦ UNIT: mm



Mounting Screw Size #10

PART NO	PACKAGE
M-TAB-5	500



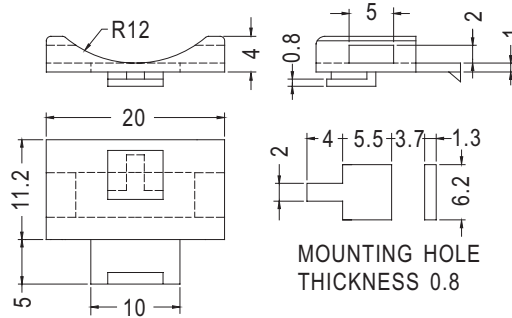
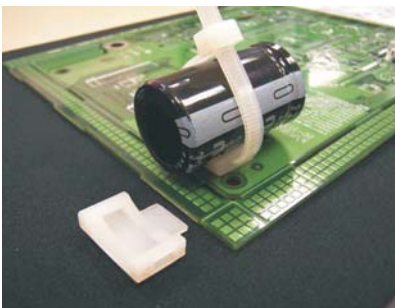
Mounting Screw Size 5/16

PART NO	PACKAGE
M-TAB-10	500

MOUNTING TAB

PLASTECH

- ✦ MATERIAL: NYLON 66 (UL)
- ✦ FLAME CLASS: 94V-2
- ✦ COLOR: BLACK
- ✦ UNIT: mm



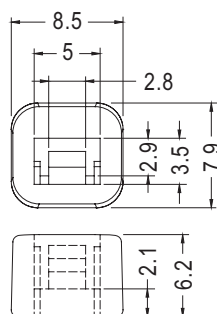
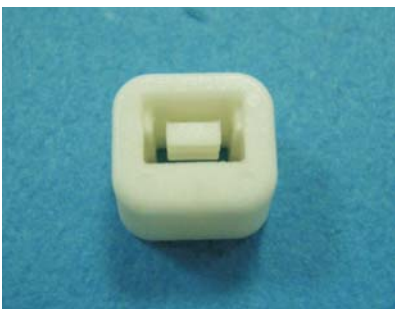
MOUNTING HOLE THICKNESS 0.8

PART NO	PACKAGE
M-TAC-1	500

CABLE TIE BUCKLE

PLASTECH

- ✦ MATERIAL: NYLON 66 (UL)
- ✦ FLAME CLASS: 94V-0/94V-2
- ✦ COLOR: NATURAL
- ✦ UNIT: mm



PART NO	PACKAGE
YJHH-4.8	1000