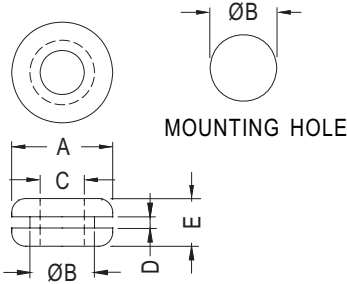


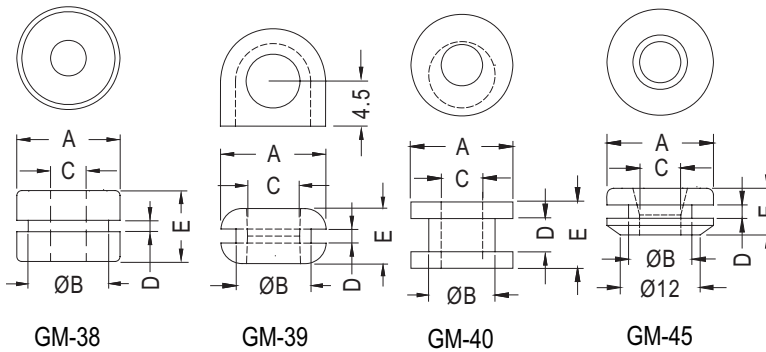
GROMMET

PLASTECH

- MATERIAL:NBR/RUBBER/
SILICON RUBBER
- COLOR:BLACK
- UNIT:mm



PART NO	A	B	C	D	E	PACKAGE
GM-1	8.0	4.8	3.2	1.6	6.4	2000
GM-1A	9.5	6.4	4.0	1.6	6.4	
GM-2	10.8	8.0	4.5	1.6	4.5	1000
GM-3	14.4	9.5	6.3	1.6	7.0	
GM-3A	14.2	11.0	8.0	1.6	4.8	
GM-4	17.5	12.7	9.5	1.6	6.8	
GM-5	22.0	17.5	14.2	1.6	4.8	500
GM-6	22.0	19.0	16.0	1.6	5.5	
GM-6A	25.0	19.5	18.0	1.6	6.0	250
GM-7	31.4	25.2	18.5	1.6	8.0	
GM-8	19.5	14.0	6.0	1.0	7.0	1000
GM-9	15.9	12.7	9.5	1.5	6.4	
GM-11	7.9	4.8	3.2	1.6	4.8	2000
GM-15	10.8	8.0	5.0	1.6	4.5	
GM-18	13.0	8.4	5.5	3.3	6.3	1000
GM-30	13.3	9.0	5.8	2.0	6.2	
GM-38	10.4	8.1	3.6	1.15	7.15	
GM-39	10.5	7.5	5.2	1.4	5.5	
GM-40	24.0	17.5	14.0	3.0	7.0	
GM-42	27.0	20.8	12.7	1.6	7.8	250
GM-43	11.0	7.9	4.7	1.6	6.0	
GM-45	16.0	9.5	6.2	2.0	7.0	1000
GM-50	17.5	12.0	10.0	2.0	6.8	

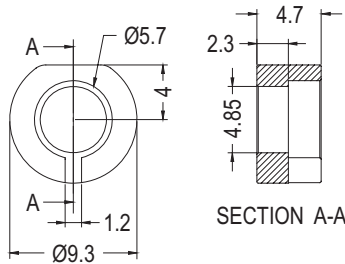


5

GROMMET

PLASTECH

- MATERIAL:POM (UL)
- FLAME CLASS:94HB
- COLOR:NATURAL
- UNIT:mm



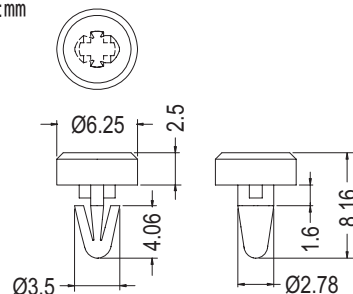
NEW

PART NO	PACKAGE
010406	1000

HOLE PLUGS

PLASTECH

- MATERIAL:NYLON 66 (UL)
- FLAME CLASS:94V-2
- COLOR:WHITE
- UNIT:mm



NEW

PART NO	PACKAGE
FIXE-1	1000

CHASSIS Ø2.8
THICKNESS 1.2