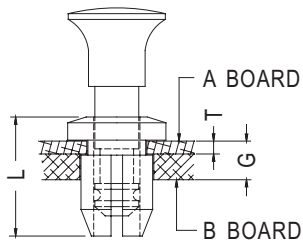


- CLIP MATERIAL: NYLON 66 (UL) 94V-2/  
PC (UL) 94V-2
- PIN MATERIAL: NYLON 66 (UL) 94V-2
- DL-11 MATERIAL: POM (UL) 94HB
- COLOR: BLACK/WHITE/NATURAL
- UNIT: mm



PLUNGER HEAD STYLE				
DL-1/DL-6	DL-2	DL-3/DL-4	DL-5	DL-11

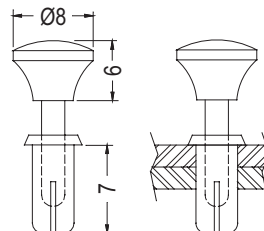


PART NO	L	T	G	HOLE		PACKAGE
				A BOARD	B BOARD	
DL-1	11.1	1.6	2.0~4.2	Ø7.5	Ø8.0	500
DL-2				Ø6.0~Ø6.1	Ø6.4	
DL-3	10.4	1.6	2.0~4.2	Ø4.5	Ø4.8	
DL-4	11.4	2.5	3.0~5.2			
DL-5	9.5	1.6	2.0~3.6	Ø6.6	Ø7.8	
DL-6	12.0	2.4	3.5			
DL-7				Ø6.0	Ø6.35	
DL-9	13.0	4.3	6.9	Ø6.0	Ø6.35	
DL-10	11.0	2.0	5.5	Ø6.0	Ø6.4~Ø6.5	
DL-11	10.5	1.0~1.65	2.1~4.35	Ø7.5~Ø7.6	Ø8.0~Ø8.2	

# SNAP RIVET

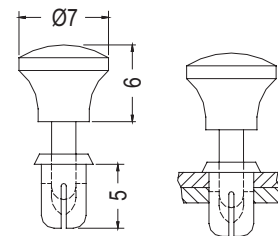
7

- MATERIAL: NYLON 66 (UL)
- FLAME CLASS: 94V-2
- COLOR: BLACK
- UNIT: mm



CHASSIS Ø4.1  
THICKNESS 4.5~5.5

PART NO	PACKAGE
SRS4-7P	1000



CHASSIS Ø3.5  
THICKNESS 2.5~3.5

PART NO	PACKAGE
SRS3.5-5P	1000