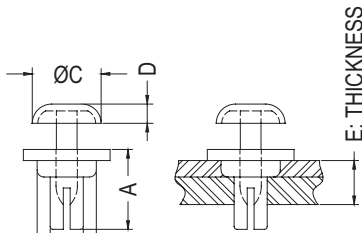
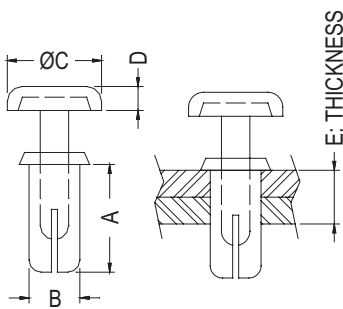
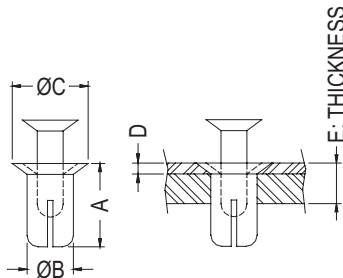


- MATERIAL: NYLON 66 (UL)
- FLAME CLASS: 94V-2
- COLOR: BLACK/WHITE
- UNIT: mm



ONLY FOR
SR2.5-5.8



ONLY FOR
SR3-13F, SR4-6F,
SR4-7F, SR4-10F,
SR5-4.5F,

PART NO	A	B	C	D	E	MOUNTING HOLES	PACKAGE
SR2-4	4.0	2.0	3.5	0.5	2.0~3.0	2.0	1000
SR2-5	5.0		4.8	0.75	2.5~3.5		
SR2-6	6.0				3.5~4.5		
★SR2.5-5.8	5.8	2.4	5.0	1.4	2.2~3.2	2.4	
SR2.6-3.2	3.2	2.6	5.0	1.7	1.0~2.0	2.6	
SR2.6-4.2	4.2				2.0~3.0		
SR2.6-4.8	4.8			2.5~3.4			
SR2.6-5.5	5.5			1.4	3.0~4.3		
SR2.6-7.2	7.2						
★SR2.8-24	24.0	2.8	6.0	1.7	18.5~19.5	2.8	
SR3-3.5	3.6	3.0	6.3	1.7	1.0~2.0	3.0	
SR3-4.5	4.5				2.0~3.0		
SR3-5.5	5.5				3.0~4.0		
SR3-6	6.0				3.5~4.5		
SR3-6.5	6.5				4.0~5.0		
SR3-7.5	7.5				5.0~6.0		
SR3-8	8.1				5.5~6.5		
SR3-9	9.1				6.5~7.5		
SR3-10	10.0				7.5~8.5		
SR3-13	13.0				6.2		10.0~11.0
SR3-13F	13.0	3.2	5.3	1.3	3.2		
SR3-15	15.5	3.0	6.2		11.5~13.0	3.0	
SR3-18.5	18.5				15.0~16.5		
SR3.5-4.5	4.5	3.5	6.3	1.7	2.0~3.0	3.5	
SR3.5-5	5.0				2.5~3.5		
SR3.5-5.5	5.5				3.0~4.0		
SR3.5-6	6.0				4.5~5.5		
SR3.5-7	7.0				6.0~7.0		
SR3.5-9	9.0				18.5~20.0		
SR3.5-23	23.0				3.45		
SR4-5	5.0				4.0		7.8
SR4-6	6.1	7.5	1.1	3.0~4.0			
SR4-6F							
SR4-7	7.1	8.0	2.0	4.5~5.5			
SR4-7FS	7.0	6.4	0.8	3.5~5.0			
SR4-8	8.1	8.0	2.0	5.5~6.5			
SR4-8F	8.2	7.5	1.1				
SR4-9	9.0	8.0	2.0	6.5~7.5			
SR4-10	10.0			7.5~8.5			
★SR4-10F	10.0	6.8	1.5				
SR4-12	12.0	8.0	2.0	9.5~10.5			
SR4-13F	14.5	6.4	1.0	10.0~11.0			
SR4-14	13.7	8.0	2.0	11.0~12.0			
SR4-15	15.3			11.5~13.0			
SR4-20	20.0			15.0~17.0			
SR4-25	24.5			22.0~23.0			
SR5-4.5	4.6			8.9	2.2	1.5~2.5	
SR5-4.5F	7.0	8.5	2.5				
SR5-5.5	5.5	8.9	2.2	2.5~3.5	5.0		
SR5-6.5	6.5			3.5~4.5			
SR5-7.5	7.5			4.5~5.5			
SR5-8.5	8.4			5.5~6.5			
SR6-6	6.0			6.0		12.0	2.5