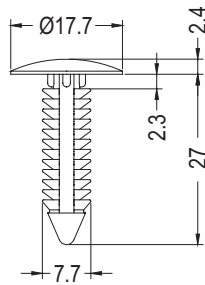


MOUNTING BUTTON

PLASTECH

- MATERIAL: NYLON 66 (UL)
- FLAME CLASS: 94V-2
- COLOR: WHITE/BLACK
- UNIT: mm

NEW

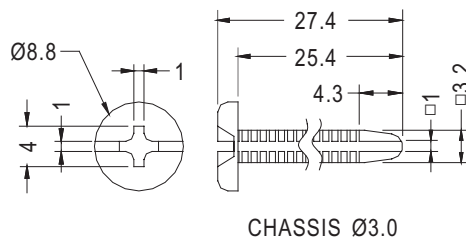


PART NO	PACKAGE
MBW-24	1000

MOUNTING BUTTON

PLASTECH

- MATERIAL: NYLON 66 (UL)
- FLAME CLASS: 94V-2
- COLOR: NATURAL
- UNIT: mm

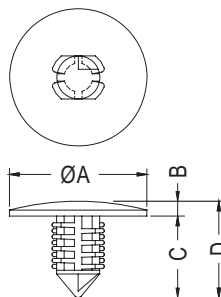


PART NO	PACKAGE
MBW-18	1000

MOUNTING BUTTON

PLASTECH

- MATERIAL: NYLON 66 (UL)
- FLAME CLASS: 94V-2
- COLOR: BLACK
- UNIT: mm



PART NO	A	B	C	D	MOUNTING HOLE	PANEL THICKNESS	PACKAGE
MBW6-11	18.5	2	11	13	6.35	0.8~7.4	1000
MBW7-20	25.4	3	20	23	7.0	2.54~20	