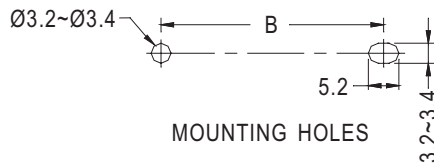
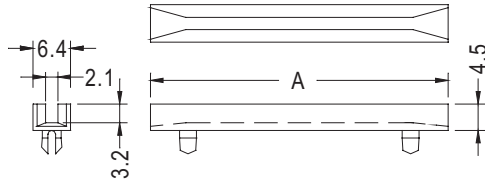
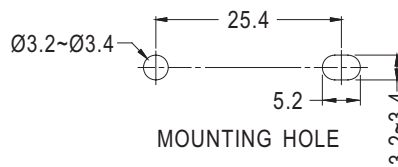
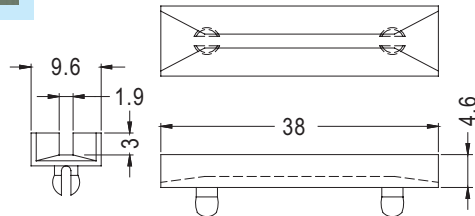


- MATERIAL: NYLON 66 (UL)
- FLAME CLASS: 94V-2
- COLOR: NATURAL
- UNIT: mm

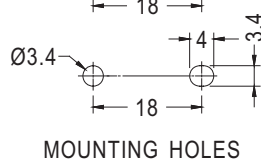
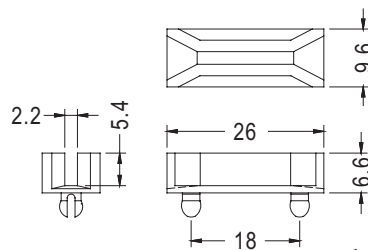
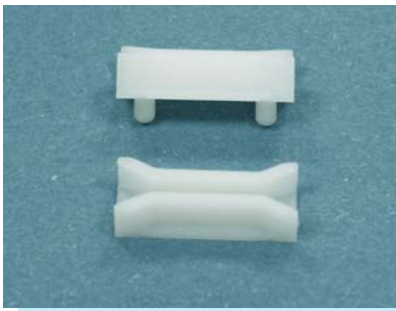


PART NO	A	B	PACKAGE
CG-38	38.0	25.4	500
CG-50	50.8	38.0	



PART NO	PACKAGE
CG-38L	500

- MATERIAL: NYLON 66(UL)
- FLAME CLASS: 94V-2
- COLOR: NATURAL
- UNIT: mm



PART NO	PACKAGE
CG-26	500