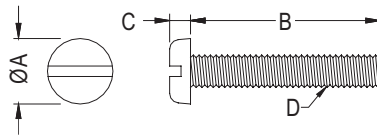
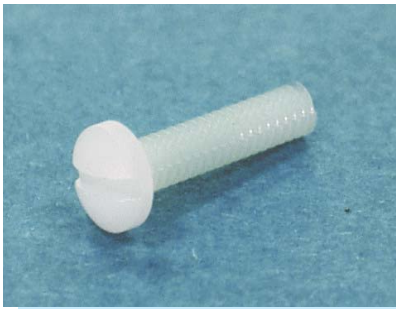
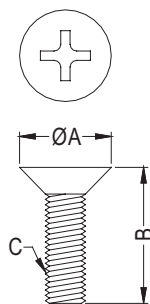


- MATERIAL:PC (UL) / NYLON 66 (UL)
- FLAME CLASS:94V-2
- COLOR:NATURAL
- UNIT:mm



PART NO	A	B	C	D	PACKAGE
M3.5-10	6.9	10.0	2.2	M3.5X0.6P	1000
M3.5-15		15.0			
M3.5-20		20.0			
M3.5-25		25.0			
M3.5-30		30.0			
S632-6	6.7	6.35	2.5	6-32 UNC	2000
S632-8		8.0			
S632-9		9.5			
S632-12		12.7			
S632-15		15.9			
S632-19		19.1			
S632-25		25.4			
S632-28		28.0			
S440-6	5.2	6.4	2.1	4-40 UNC	2000
S440-8		8.0			
S440-9		9.5			
S440-12		12.7			
S440-15		15.5			

- MATERIAL:PC (UL) / NYLON 66 (UL)
- FLAME CLASS:94V-2
- COLOR:NATURAL
- UNIT:mm



PART NO	A	B	C	PACKAGE
M3-5F	5.3	4.8	M3X0.5P	1000
M3-6F	5.6	6.0	M3X0.5P	
M3-8F	5.6	8.0	M3X0.5P	
M3-10F	5.6	10.0	M3X0.5P	
M3-12F	5.6	12.0	M3X0.5P	
M3-14F	5.6	14.0	M3X0.5P	
M3-4.2FN	6.0	4.2	M3X0.5P	2000
M4-8F	7.6	8.0	M4X0.7P	1000
M4-10F	7.6	10.0	M4X0.7P	
M4-12F	7.6	12.0	M4X0.7P	
M4-14F	7.6	14.0	M4X0.7P	
M4-16F	7.6	16.0	M4X0.7P	
M5-15F	9.1	14.8	M5X0.8P	